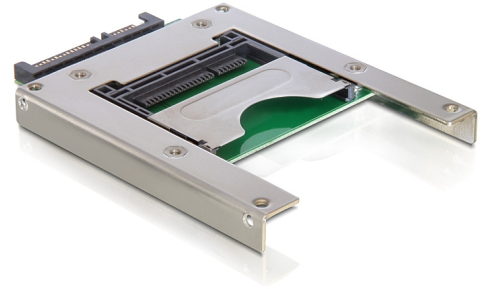


# Delock 2.5" Card Reader SATA > CFast

## Description

Use this Delock 2.5" Card Reader for your CFast memory cards. It can be installed internally to your PC via SATA port. The optional CFast card works as additional storage space, as well as HDD for an operating system.



### Item no. 91681

EAN: 4043619916818

Country of origin: Taiwan,  
Republic of China

Package: Retail Box

## Specification

- Connector:  
1 x CFast type I slot  
1 x SATA 1.5 Gb/s 22 pin male
- Bootable
- Supports CFast type I memory cards
- Supports memory cards up to 64 GB
- Dimensions (LxWxH): ca. 95 x 70 x 9.4 mm

## System requirements

- Windows Vista/Vista-64/7/7-64, Mac OS 10.1.3, Linux 10.2
- PC with one free 2.5" bay
- PC with a free SATA port

## Package content

- Card Reader SATA > CFast

- SATA data / power cable
- User manual

## Images

