

# Delock Barcode Scanner Module 1D and 2D - German Version

## Description

This barcode scanner module by Delock can be used for installation in any housing.

### Small but powerful

The module convinces with a size of 21 x 14 x 9 mm. **All common 1D and 2D barcode** types can be precisely captured even at long distances. Additionally, the scanner recognizes barcodes displayed on displays and monitors.

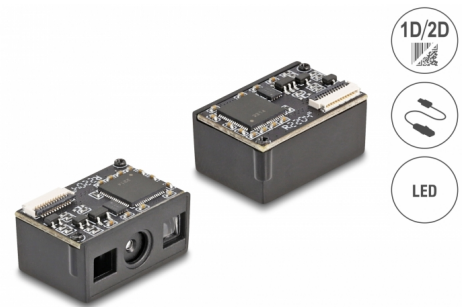
### Automatic adaptation to ambient brightness

The scanner automatically adapts to the ambient brightness and captures up to **30 scans per second** under optimal lighting conditions.

In low ambient brightness, the barcode is illuminated by an **additional white LED** and can therefore also be used in poor lighting conditions.

## Note

This module is intended exclusively for the output of the German keyboard.



21 x 14 x 9 mm

**Item no. 90603**

EAN: 4043619906031

Country of origin: China

Package: White Box

## Specification

- Connector: 1 x FPC 12 pin female
- Decoding chip: ARM Cortex 32 Bit
- Resolution: max. 640 x 480
- Reading distance: ca. 30 mm to 350 mm
- Reading accuracy: 4 mil
- Light colour: visible LED red
- Compensation light: LED white
- Sensor: CMOS image sensor
- Scan rate: up to 30 scans per second
- Scan angle: 44°

- Surrounding brightness: max. 100000 Lux
  - Input voltage: 5 V
  - Current consumption:
    - operation: max. 110 mA
    - standby: max. 60 mA
  - Operating temperature: -20 °C ~ 60 °C
  - Storage temperature: -40 °C ~ 80 °C
  - Relative humidity: 0 - 95 % (non condensing)
  - Colour: black
  - Weight: ca. 2 g
  - Dimensions (LxWxH): ca. 21 x 14 x 9 mm
  - Scancodes:
    - Code 128
    - Code 39
    - Interleaved 2 of 5
    - EAN-8 / EAN-13
    - ISBN - 13
    - Data Matrix
    - PDF417
    - QR Code
- 

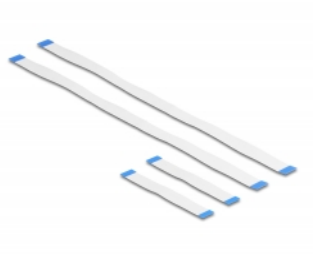
## System requirements

- Android 11.0 or above
  - iPad Pro (2018)
  - Linux Kernel 5.15 or above
  - Mac OS 12.4 or above
  - Windows 8.1/8.1-64/10/10-64/11
- 

## Package content

- Barcode scanner module
- 2 x FPC 12 pin flat ribbon cable, length ca. 6 cm
- 2 x FPC 12 pin flat ribbon cable, length ca. 20 cm
- User manual

## Images



Pin	SW Input/output	Define	Description
Pin 1	-	NC	
Pin 2	Power	VCC	Input +3.3V
Pin 3	GND	GND	-
Pin 4	Input	RX	RS485
Pin 5	Output	TX	RS485
Pin 6	Input	D-	USB D-
Pin 7	Output	D+	USB D+
Pin 8	-	NC	
Pin 9	Output	SLEEP	Microcontroller Sleep Mode
Pin 10	Output	LED	Microcontroller LED
Pin 11	Input	RESET	Microcontroller Reset

A schematic diagram showing the connection of the pins to a microcontroller and a USB port. The diagram includes labels for 'VCC', 'GND', 'RX', 'TX', 'D-', 'D+', 'SLEEP', 'LED', and 'RESET'.

### Technical characteristics

Operating voltage:	5 V
Operating temperature:	-20 °C ~ 60 °C
Current consumption:	Betrieb: max. 110mA Standby: max. 60mA
Resolution:	640 x 480
Scan rate:	30 Scans pro Sekunde
Reading distance:	30 mm - 350 mm
Sensor:	CMOS Bildsensor
Scancodes:	EAN-8 EAN-13 Interleaved 2 of 5 Standard Code 39 Code 128 PDF417 DataMatrix QR Code ISBN - 13
Surrounding brightness:	100000 Lux

### Physical characteristics

Weight:	2 g
Length:	21.0 mm
Width:	14.0 mm
Height:	9.0 mm
Colour:	black