

Delock Serial Barcode scanner 2D fixed mount - Image scanner

Description

This wired serial barcode scanner by Delock can be connected to a device with a free RS-232 interface. With this Image scanner with CMOS image sensor, all common 1D and 2D barcode types can be detected without using any scan button. Furthermore, this fixed mount barcode scanner is able to read barcodes shown on displays and monitors.

Even in a completely dark environment, the scanner turns on automatically, when an object appears in its scanning area. There is an additional red LED on top of the scanner indicating the readiness of the scanner for operation and a green LED confirming a positive scan.

Depending on your specific requirement, various visual and acoustic signals can be configured and the scan process also be triggered by the appropriate software.

The resistant housing protects the scanner from external mechanical influences and prevents the limited ingress of dust and low pressure water jets. With the included mounting brackets, the scanner can be installed variable in different alignments.



Item no. 90287

EAN: 4043619902873

Country of origin: Taiwan,
Republic of China

Package: White Box

Specification

- Connectors:
 - 1 x Serial RS-232 DB9 female with screws
 - 1 x 5 V DC jack
- Resolution:
 - Code 39: 0.127 mm
 - QR Code: 0.169 mm
- Trigger: automatic, software
- Reading distance: ca. 45 mm bis 285 mm
- Light source: LED, 625 nm
- Light colour: visible LED red
- Aimer: Laser Class 1, 650 nm, red
- Sensor: CMOS image sensor
- Scan rate: up to 60 frames per second

- Scan angle:
horizontal: 36°
vertical: 23°
- Surrounding brightness: max. 30000 Lux
- Input voltage: 5 V
- Power supply via pin 9 on the RS-232 port or via DC jack
- Current consumption:
operation: max. 320 mA
standby: max. 100 mA
- Operating temperature: -10 °C ~ 55 °C
- Storage temperature: -20 °C ~ 65 °C
- Relative humidity: 0 - 95 % (non condensing)
- Protection class: IP55
- Colour: black
- Weight:
Barcode scanner: ca. 85 g
Mounting brackets: ca. 15 g
- Dimensions (LxWxH): ca. 56 x 41 x 20 mm
- Cable length: ca. 85.9 cm
- Software:
EzUtility Software (standard mode/automatic Trigger)
BEO Software (command mode/software Trigger)
- Scancodes:
1D Codes:
UPC-A / UPC-E
EAN-8 / EAN-13
Matrix 2 of 5
China Postal Code (Toshiba Code)
Industrial 2 of 5
Interleaved 2 of 5
Codabar
Code 11
Code 32
Standard Code 39
Full ASCII Code 39
Code 93
Code 128
EAN / UCC 128
MSI Plessey Code
UK Plessey Code
Telepen Code
GS1 Databar
IATA Code

2D Codes:
PDF417
DataMatrix
QR Code
Micro QR Code
Chinese Sensible Code

Specification of power connector

- Ground outside, plus inside
- Dimensions:
inside: \varnothing ca. 2.1 mm
outside: \varnothing ca. 5.5 mm
length: ca. 12.5 mm

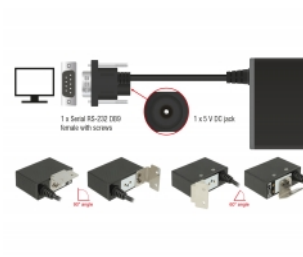
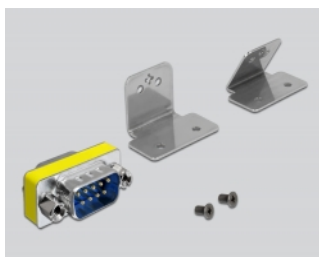
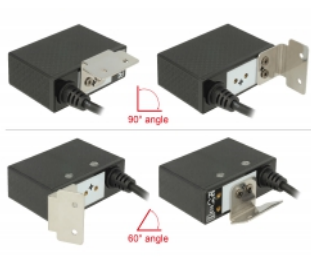
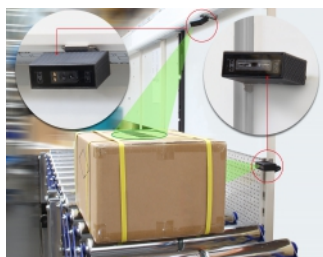
System requirements

- Windows 7/7-32/8.1/8.1-64/10/10-64
- Device with RS-232 interface

Package content

- Barcode scanner
- 1 x mounting bracket 90°
- 1 x mounting bracket 60°
- 2 x screw
- User manual
- Gender Changer

Images



Interface

connector:	1 x serial RS-232 DB9 female with screws
------------	--

Technical characteristics

Operating voltage:	5 V
Operating temperature:	-10 °C ~ 55 °C
Current consumption:	operation: 320 mA standby: 100 mA
Resolution:	0,127 mm 0,169 mm
Scan rate:	60 pictures per second
Trigger:	automatic software
Reading distance:	45 mm - 285 mm
Light source:	LED, 625 nm
Sensor:	CMOS Bildsensor

Scancodes:	UPC-A UPC-E EAN-8 EAN-13 Matrix 2 of 5 China Postal Code (Toshiba Code) Industrial 2 of 5 Interleaved 2 of 5 Codabar Code 11 Code 32 Standard Code 39 Full ASCII Code 39 Code 93 Code 128 MSI Plessey Code UK Plessey Code Telepen Code GS1 Databar IATA Code EAN / UCC 128 PDF417 DataMatrix QR Code Micro QR Code Chinese Sensible Code
Surrounding brightness:	30000 Lux

Physical characteristics

Weight:	85 g
Cable length incl. connector:	86 cm
Length:	56 mm
Width:	41 mm
Height:	20 mm
Colour:	black