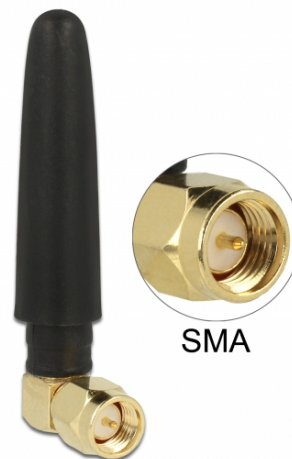




# Delock LTE anténa SMA samec 90° 2 dBi všesměrová pevná černý

## Popis

Tato anténa od Delocku umožňuje použití různých LTE šířek uvnitř i venku.



## Specifikace

- Konektor: 1 x SMA samec 90°
- GSM, UMTS, LTE, Z-Wave 908 / 921 MHz, ZigBee 902 / 928 MHz, DECT, NB-IoT
- Frekvenční rozsah:  
880 - 960 MHz  
1710 - 1990 MHz
- Anténní zisk: 2 dBi
- Impedance: 50 Ohm
- VSWR: 2,0
- Polarizace: lineární
- Provozní teplota: -40 °C ~ 85 °C
- Materiál pouzdra: rubber
- Barva: černá
- Délka antény: cca. 5 cm

## Systémové požadavky

- Zařízení s volným SMA konektorem

## Obsah balení

- Anténa

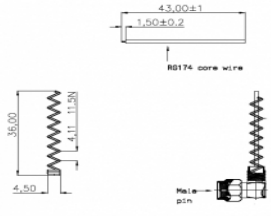
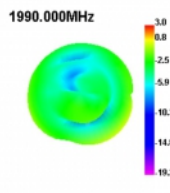
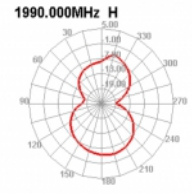
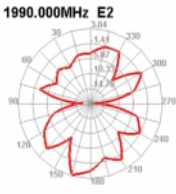
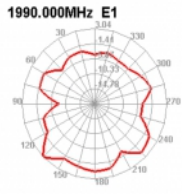
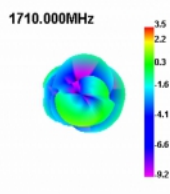
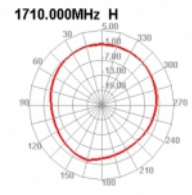
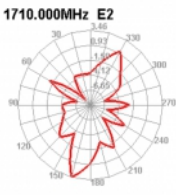
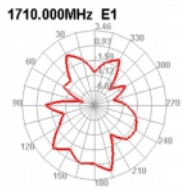
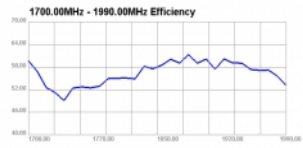
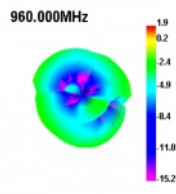
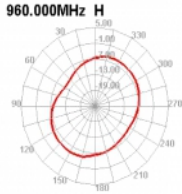
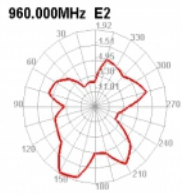
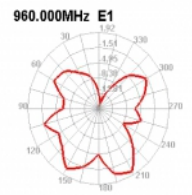
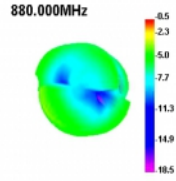
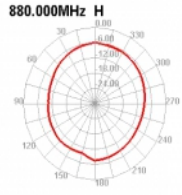
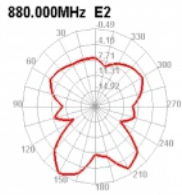
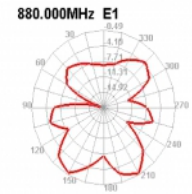
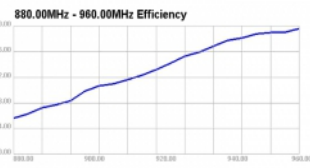
## Číslo produktu 89623

EAN: 4043619896233

Země původu: China

Balení: Plastová taška se zipem

Příslušenství





## Interface

konektor: 1 x SMA samec 90°

## Technical characteristics

Frequency range: 1710 - 1990 MHz  
880 - 960 MHz

Antenna gain: 2 dBi

Impedance: 50 Ω

Provozní teplota: -40 °C ~ 85 °C

Polarisation: linear

VSWR: 2,0

## Physical characteristics

Antenna type: všesměrová

Materiál pouzdra: rubber

Délka: 5 cm

Barva: černá