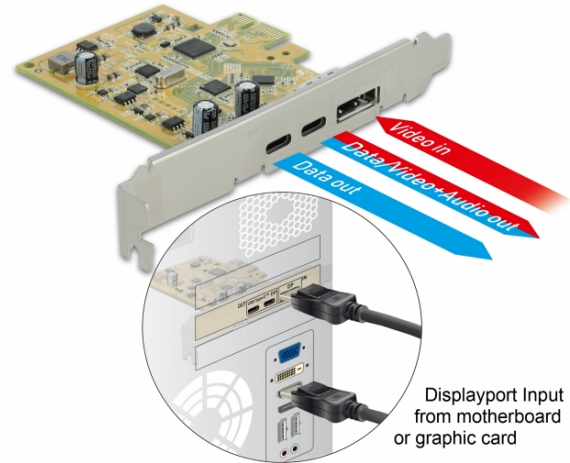


# Delock PCI Express Card > 1 x external USB Type-C™ 3.1 female + 1 x external USB Type-C™ 3.1 (DP Alt Mode) female

## Description

This PCI Express card by Delock expands the PC by two external USB-C™ ports. Different USB-C™ devices, such as docking stations, card readers, external enclosure etc., can be connected to the card. By using the included cable, the DisplayPort connector of the PCI Express card can be connected to a DisplayPort output of a graphics card on the motherboard. Therefore one USB-C™ port will be DP Alt Mode capable. A monitor can be connected to this port in order to transmit video and audio signals.



## Specification

- Connectors:
  - external:
    - 1 x SuperSpeed USB 10 Gbps (USB 3.1 Gen 2) USB Type-C™ female
    - 1 x SuperSpeed USB 10 Gbps (USB 3.1 Gen 2) USB Type-C™ female (DP Alt Mode capable)
    - 1 x DisplayPort 20 pin female (for DP Alt Mode function)
  - internal:
    - 1 x PCI Express x1, V3.0
- Chipset: Asmedia ASM1142
- Data transfer rate up to:
  - SuperSpeed USB 10 Gbps,
  - SuperSpeed USB 5 Gbps,
  - Hi-Speed 480 Mbps,
  - Full-Speed 12 Mbps,
  - Low-Speed 1.5 Mbps
- DisplayPort 1.2 specification
- Resolution up to 3840 x 2160 @ 60 Hz (depending on the system and the connected hardware)
- Power supply via PCI Express interface
- Electrical power per port: max. 7.5 watt (5 V / 1.5 A)
- Supports eXtensible Host Controller Interface (xHCI) specification 1.1

## System requirements

- Linux Kernel 4.4 or above
- Windows 7/7-64/8.1/8.1-64/10/10-64
- PC with one free PCI Express slot
- Graphics card with DisplayPort output (to support DP Alt Mode)

## Package content

- PCI Express card
- DisplayPort cable
- Low profile bracket
- Driver CD
- User manual

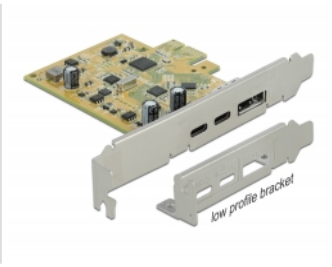
## Item no. 89582

EAN: 4043619895823

Country of origin: China

Package: Retail Box

Images



**General**

**Specification:** eXtensible Host Controller Interface (xHCI) 1.1  
DisplayPort 1.2

**Supported operating system:** Linux Kernel 4.4 or above  
Windows 10 32-bit  
Windows 10 64-bit  
Windows 7 32-bit  
Windows 7 64-bit  
Windows 8.1 32-bit  
Windows 8.1 64-bit

**Interface**

**External:** 2 x SuperSpeed USB 10 Gbps (USB 3.2 Gen 2) USB Type-C™ female  
1 x DisplayPort 20 pin female (for DP Alt Mode function)

**Internal:** 1 x PCI Express x1, V3.0

**Technical characteristics**

**Chipset:** Asmedia ASM1142

**Data transfer rate:** SuperSpeed USB 10 Gbps