

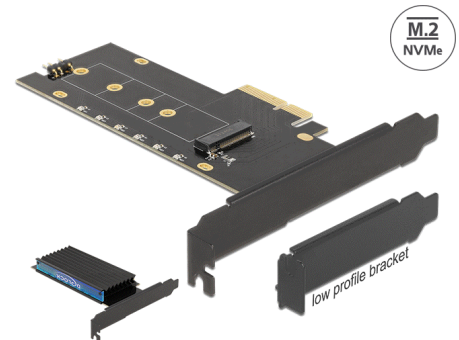
Delock PCI Express x4 Card to 1 x internal NVMe M.2 Key M with heat sink and RGB LED illumination - Low Profile Form Factor

Description

This PCI Express card by Delock expands the PC by **one M.2 slot**. One M.2 module in 2280, 2260, 2242 or 2230 format can be connected.

Heat sink and LED illumination

With the help of the large heat sink sufficient cooling of the M.2 modules is guaranteed. The PCIe card has **6 LEDs to illuminate** the computer's interior. The included transparent plastic panel can be placed into the heat sink and additionally the cable has to be connected to the corresponding LED plug on the motherboard. Then, **various lighting settings** can be adjusted.



Item no. 89013

EAN: 4043619890132

Country of origin: China

Package: Retail Box

Specification

- Connectors:
internal:
1 x 67 pin M.2 key M slot
1 x PCI Express x4, V4.0
1 x 3 pin LED pin header male (5 V)
- Interface: PCIe
- Supports M.2 modules in format 2280, 2260, 2242 and 2230 with key M or key B+M based on PCIe
- Maximum height of the components on the module: 1.5 mm, application of double-sided assembled modules supported
- 6 x LED
- Bootable
- Supports NVM Express (NVMe)

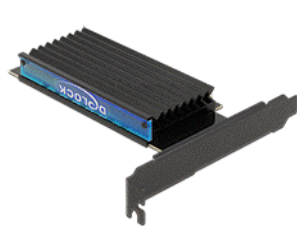
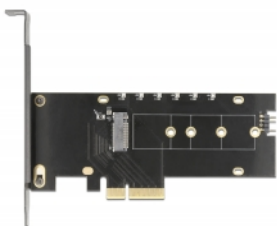
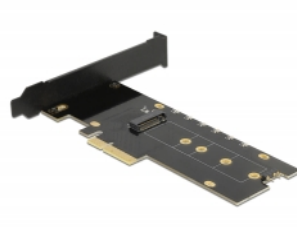
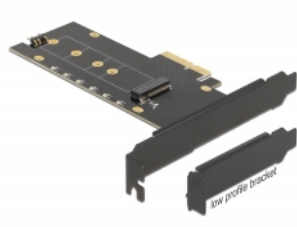
System requirements

- Linux Kernel 4.6.4 or above
- Windows 8.1/8.1-64/10/10-64
- PC with one free PCI Express x4 / x8 / x16 / x32 slot
- Motherboard with a free 3 pin pin header male

Package content

- PCI Express card
- Low profile bracket
- Heat sink
- Plastic panel
- 4 x thermal conductive pad
- Pin header female cable (LED), length ca. 45 cm
- Mounting material
- Screwdriver
- User manual

Images



General

Function:	NVM Express (NVMe)
Supported operating system:	Linux Kernel 4.6.4 or above Windows 10 32-bit Windows 10 64-bit Windows 8.1 32-bit Windows 8.1 64-bit
LED indicator:	6 x
Supported module:	M.2 modules in format 2280, 2260, 2242 and 2230 with key M or key B+M based on PCIe
Maximum height of the components on the module:	1.5 mm application of double-sided assembled modules supported

Interface

Internal:	1 x 67 pin M.2 key M slot 1 x PCI Express x4, V4.0 1 x 3 pin LED pin header male (5 V)
-----------	--