

Delock Multiband GNSS 5G LTE-MIMO, WLAN MIMO IEEE 802.11 ac/a/h/b/g/n Antenna 5x RP-SMA omnidirectional roof mount outdoor

Description

This high quality multi band antenna is composed of five physically separate transmitting and receiving units. The GNSS patch antenna receives signals from the Global Navigation Satellite Systems GPS and GLONASS. Two PCB antennas in MIMO mode working in all popular 5G and LTE bands. Two other PCB antennas in MIMO mode cover off the WLAN area in the dual band completely. Furthermore, this multi band antenna is capable of GSM, UMTS, Bluetooth, Z-Wave and ZigBee signals to be transmitted. The multi band antenna delivers and transmits signals in all circumstances reliably, quickly and accurately.

5G the new mobile radio standard

5G unlike its predecessors LTE (4G) and UMTS (3G) will use more and wider frequency spectrums.

The 5G standard promises **more throughput, capacity and low latency**.



Item no. 88967

EAN: 4043619889679

Country of origin: Taiwan,
Republic of China

Package: Box

Specification

- Connectors: 5 x RP-SMA plug

- **GNSS GPS GLONASS:**

Frequency range:

GPS: L1, 1.5754200 GHz

GLONASS: LG, 1.6025625 - 1.6155000 GHz

Gain: 4 dBi

VSWR: < 2

Impedance: 50 Ohm

Polarisation: RHCP

- **LNA GNSS:**

Frequency range:

GPS: L1, 1.5754200 GHz

GLONASS: L1, 1.6025625 - 1.6155000 GHz

Gain: 30 dBi

Voltage: 3.3 - 5.0 V

Current: 17 mA

VSWR: < 2

Impedance: 50 Ohm

Polarisation: linear

Cable type: RG-174

Cable attenuation:

2.4 GHz: 2.06 dB per meter

6.0 GHz: 3.45 dB per meter

• **LTE MIMO:**

Frequency range:

698 - 960 MHz

1.710 - 2.170 GHz

2.500 - 2.600 GHz

3.400 - 3.800 GHz

LTE Band: 1-10/ 12-20/ 23/ 25-30/ 33-41/ 44

GSM / UMTS/ ZigBee/ Z-Wave

Gain: 3.4 - 4 dBi

Operating power: 5 W

VSWR: < 3

Impedance: 50 Ohm

Polarisation: linear

Cable type: CFD200

Cable attenuation:

2.4 GHz: 0.55 dB per meter

5.7 GHz: 0.86 dB per meter

• **WLAN MIMO dualband**

Frequency range:

2.400 - 2.483 GHz

5.150 - 5.850 GHz

Bluetooth/ ZigBee

Gain: 4 dBi

Operating power: 1 W

VSWR: < 3

Impedance: 50 Ohm

Polarisation: linear

Cable type: CFD200

Cable attenuation:

2.4 GHz: 0.55 dB per meter

5.7 GHz: 0.86 dB per meter

- Operating temperature: -40°C - 80°C
- Housing: PC-540 PC/ABS Alloy
- Cable length: 3 m
- Cable colour: black
- Protection class: IP67
- Dimensions (LxWxH): ca. 160 x 106 x 102 mm

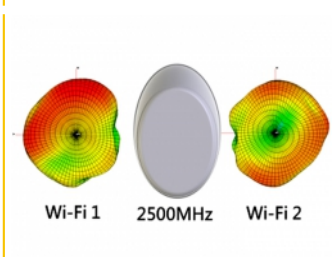
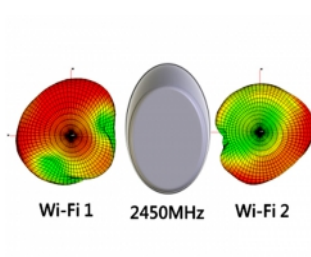
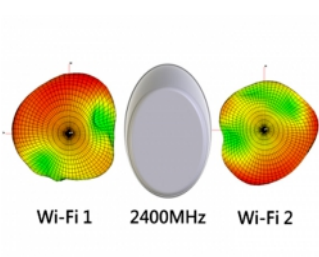
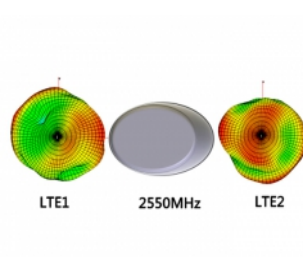
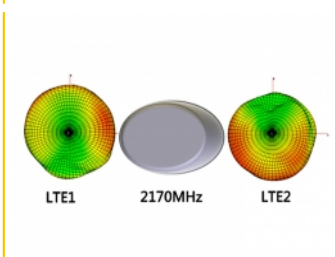
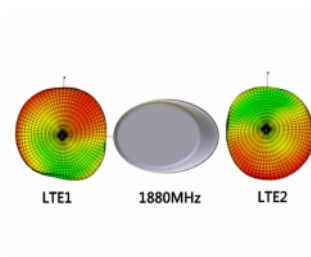
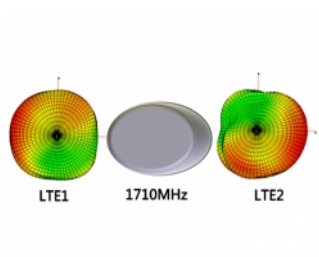
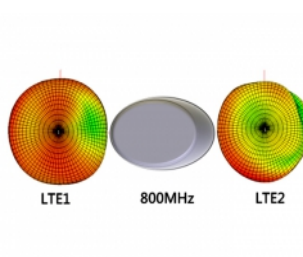
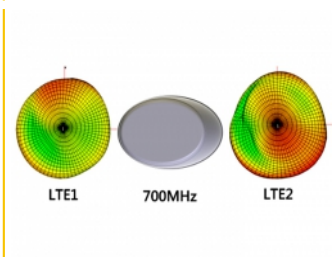
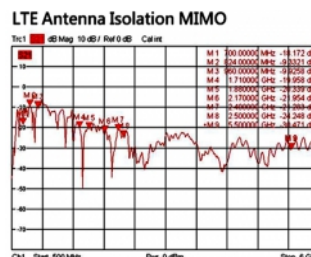
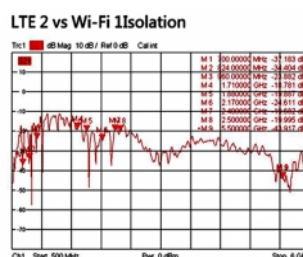
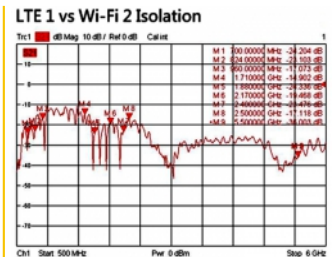
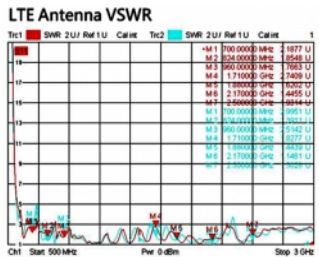
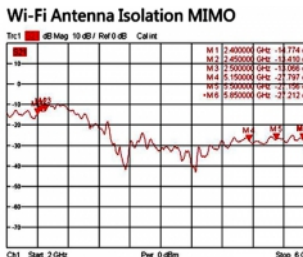
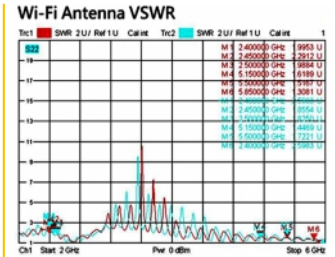
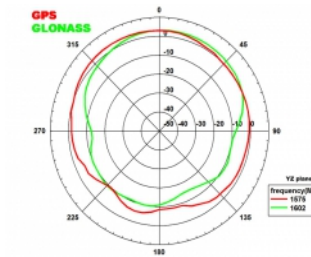
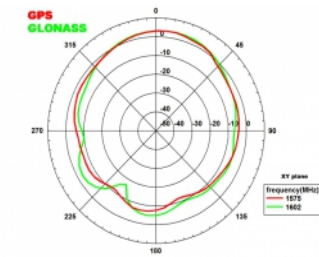
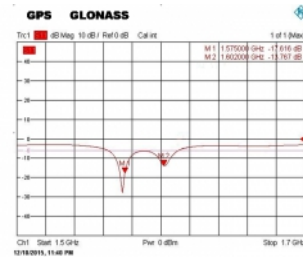
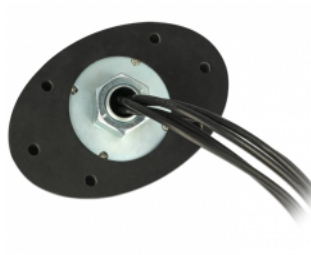
System requirements

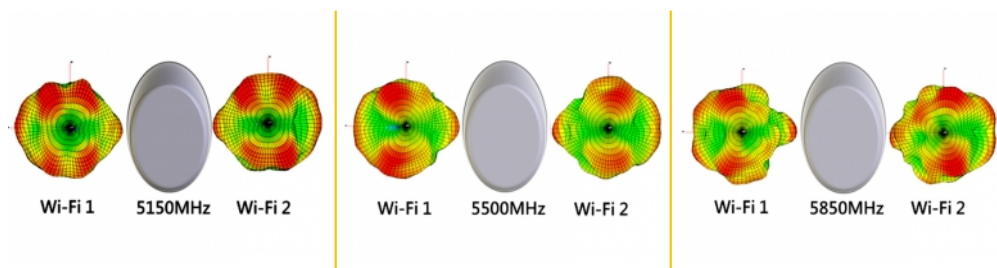
- Device with free RP-SMA connectors

Package content

- Multiband Antenna
- Nut
- 3 x RF adapter RP-SMA jack > SMA plug

Images





General

Mounting type:	design mounting
Protection category:	IP67
Suitable for indoor:	yes
Suitable for outdoor:	yes

Interface

connector:	1 x RP-SMA plug GNSS 2 x RP-SMA plug LTE 2 x RP-SMA plug WLAN
------------	---

Technical characteristics

Operating voltage:	3 - 5 V
Frequency range:	1.7100 GHz - 2.1700 GHz 2.400 - 2.483 GHz 2.5000 GHz - 2.7000 GHz 5.150 - 5.850 GHz 698 MHz - 960 MHz GLONASS: G1, 1.6025625 - 1.6155000 GHz GPS: L1, 1,5754200 GHz 3.4000 GHz - 3.8000 GHz
Gain:	4 dBi 30 dBi 3.4 - 4 dBi
Impedance:	50 Ω
Polarisation:	RHCP linear vertical
Power handling:	5 W 1 W
Current consumption:	10 - 16 mA
VSWR:	2.0 3.0

Physical characteristics

Housing colour:	white
Housing material:	PC-540 PC/ABS Alloy
Weight:	1.6 kg
Thread length:	20 mm
Cable category:	coaxial cable
Cable type:	RG-174 CFD200
Cable attenuation:	0.61 dB @ 1.8 GHz per meter CFD200 0.50 dB @ 200 MHz per meter RG-174
Cable colour:	black
Length:	16.0 cm
Width:	10.6 cm
Height:	10.2 cm
Thread type:	M24