

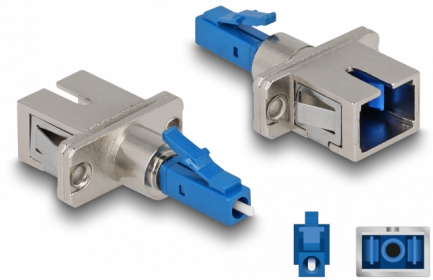
# Delock Optical Fiber Hybrid Coupler LC Simplex male to SC Simplex female blue

## Description

This LC Simplex to SC Simplex hybrid coupling by Delock enables the conversion from one connector type to the other. This means that LC and SC optical fiber cables can be easily connected to each other and they are suitable for mounting in optical fiber connection boxes, cabinets and patch panels.

### Protection by dust cover

The coupling is equipped with an appropriate cap to protect the sleeve from dust and to keep it clean.



**Item no. 87944**

EAN: 4043619879441

Country of origin: China

Package: Zip poly bag

## Specification

- Connectors:
  - 1 x LC Simplex male
  - 1 x SC Simplex female
- Insertion loss < 0.3 dB
- Return loss > 60 dB
- Ceramic sleeve
- With dust cover
- Mounting via metal holder or with screws
- 2 x mounting holes
- Mounting hole diameter: ca. 2.3 mm
- Pitch of screw hole: ca. 18 mm
- Operating temperature: -40 °C ~ 75 °C
- Colour: blue
- Material: plastic / metal
- Dimensions (LxWxH): ca. 45.0 x 22.0 x 9.3 mm

## System requirements

- A free LC Simplex female port
- A free SC Simplex male port

---

## Package content

- Optic fiber coupler
- 2 x screw

---

## Images



## Interface

Connector 1:	1 x LC Simplex male
Connector 2:	1 x SC Simplex female

## Technical characteristics

Operating temperature:	-40 °C ~ 75 °C
------------------------	----------------

## Physical characteristics

Material:	plastic, metal
Length:	45.0 mm
Width:	22.0 mm
Height:	9.3 mm
Colour:	blue