

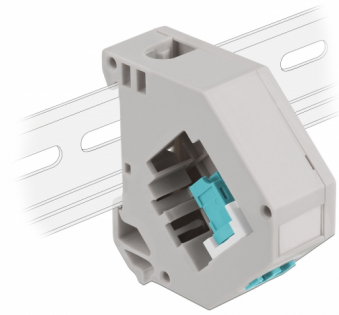
Delock DIN rail Adapter with Keystone LC Duplex female to LC Duplex female aqua

Description

This adapter by Delock contains a suitable Keystone module with a LC Duplex coupler that can be used to connect optical fiber cables.

DIN rail mounting

The adapter can be attached to a 35 mm wide DIN rail. In addition, the adapter also has a small labelling field which can be individually labelled or provided with various symbols.



Item no. 87194

EAN: 4043619871940

Country of origin: China

Package: Zip poly bag

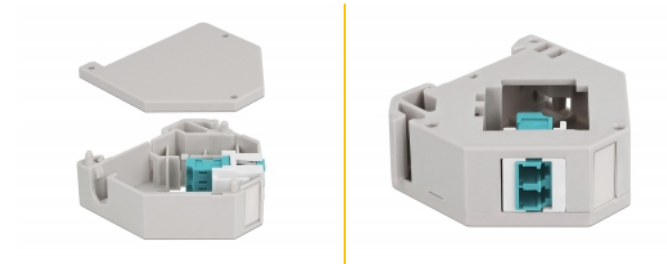
Specification

- Connectors:
 - 1 x LC Duplex female >
 - 1 x LC Duplex female
- DIN rail mounting: 35 mm
- Stackable
- With labelling field
- Operating temperature: -40 °C ~ 85 °C
- Material: plastic
- Colour: grey / white / aqua
- Dimensions (LxWxH): ca. 60.1 x 59.4 x 21.6 mm

Package content

- DIN rail adapter

Images



General

| | |
|----------------|--------------------------|
| Mounting type: | DIN rail mounting: 35 mm |
|----------------|--------------------------|

Interface

| | |
|--------------|----------------------|
| Connector 1: | 1 x LC Duplex female |
| Connector 2: | 1 x LC Duplex female |

Technical characteristics

| | |
|------------------------|----------------|
| Operating temperature: | -40 °C ~ 85 °C |
|------------------------|----------------|

Physical characteristics

| | |
|-----------|---------------------|
| Material: | Plastic |
| Length: | 60.1 mm |
| Width: | 59.4 mm |
| Height: | 21.6 mm |
| Colour: | grey / white / aqua |