

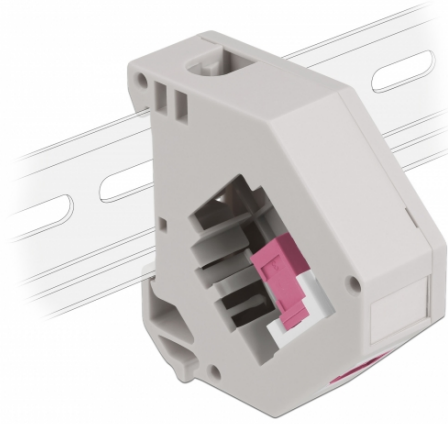
Delock DIN rail Adapter with Keystone SC Simplex female to SC Simplex female violet

Description

This adapter by Delock contains a suitable Keystone module with a SC Simplex coupler that can be used to connect optical fiber cables.

DIN rail mounting

The adapter can be attached to a 35 mm wide DIN rail. In addition, the adapter also has a small labelling field which can be individually labelled or provided with various symbols.



Specification

- Connectors:
 - 1 x SC Simplex female >
 - 1 x SC Simplex female
- DIN rail mounting: 35 mm
- Stackable
- With labelling field
- Operating temperature: -40 °C ~ 85 °C
- Material: plastic
- Colour: grey / white / violet
- Dimensions (LxWxH): ca. 60.1 x 59.4 x 21.6 mm

Item no. 87182

EAN: 4043619871827

Country of origin: China

Package: Zip poly bag

Package content

- DIN rail adapter

Images



General	
Mounting type:	DIN rail mounting: 35 mm
Interface	
Connector 1:	1 x SC Simplex female
Connector 2:	1 x SC Simplex female
Technical characteristics	
Operating temperature:	-40 °C ~ 85 °C
Physical characteristics	
Material:	plastic
Length:	60.1 mm
Width:	59.4 mm
Height:	21.6 mm
Colour:	grey / white / violet