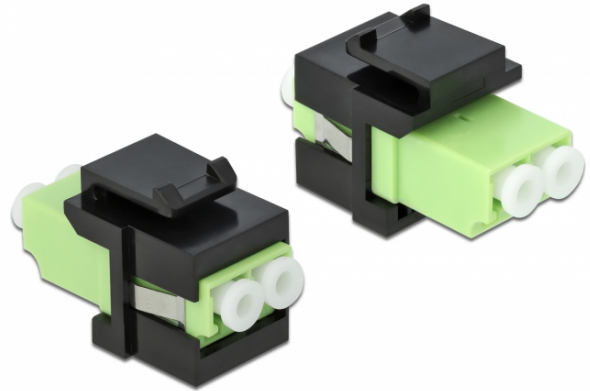


Delock Keystone Module LC Duplex female to LC Duplex female limegreen / black

Description

This module by Delock can be used to extend fiber optic cables. With its standardised dimensions it can be used for easy snap-in mounting in e.g. a Keystone patch panel, face plate or surface-mount box.



Specification

- Connectors:
 - 1 x LC Duplex female >
 - 1 x LC Duplex female
- Colour: limegreen
- For multi-mode fiber
- Insertion loss • Dust covers
- For Keystone ports with 19.2 x 14.9 mm
- Housing colour: black
- Dimensions (LxWxH): ca. 29.2 x 16.5 x 21.9 mm

System requirements

- A free LC Duplex plug

Package content

- Keystone module

Item no. 86330

EAN: 4043619863303

Country of origin: China

Package: • Zip poly bag

General	
Mounting type:	Keystone module
Interface	
Connector 1:	1 x LC Duplex
Connector 2:	1 x LC Duplex
Physical characteristics	
Housing colour:	black
Length:	29.2 mm
Width:	16.5 mm
Height:	21.9 mm
Colour:	lime green