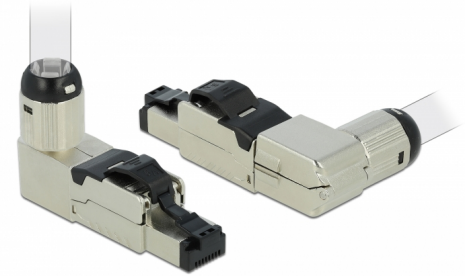


Delock RJ45 Plug field assembly Cat.6A metal angled

Description

This RJ45 plug by Delock can be used to connect network cables. Installation of the plug to various cable types is **tool-free** and time-saving.

The angle cap can be applied in **4 different directions**. Thereby all applications where angled mounting is required can be covered with a single connector. Additionally, the cable can also be led **straight back** when the angle cap is not used.



Item no. 86289

EAN: 4043619862894

Country of origin: Taiwan,
Republic of China

Package: Zip poly bag

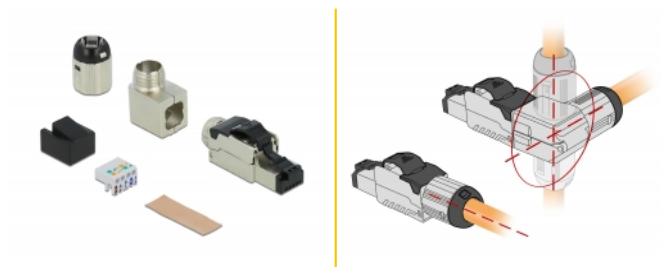
Specification

- Connectors: 1 x RJ45 plug angled
- Shielded (STP)
- Cat.6A specification
- Screwable cable boot
- Material: zinc die cast
- TIA-568A/B pinout
- For solid or stranded wire up to 0.573 mm (23 - 26 AWG)
- For cable diameter from 6.0 - 7.5 mm
- Dimensions (LxWxH): ca. 63.4 x 33.2 x 13.8 mm

Package content

- RJ45 plug
- Angle cap
- Cable manager
- Copper foil
- Dust cover

Images



General

Suitable for conductor gauge:	23 - 26 AWG
-------------------------------	-------------

Interface

External:	1 x RJ45 plug angled
Internal:	1 x LSA block

Technical characteristics

Category:	Cat.6A
-----------	--------

Physical characteristics

Housing material:	zinc die cast
Length:	63.4 mm
Width:	33.2 mm
Height:	13.8 mm