

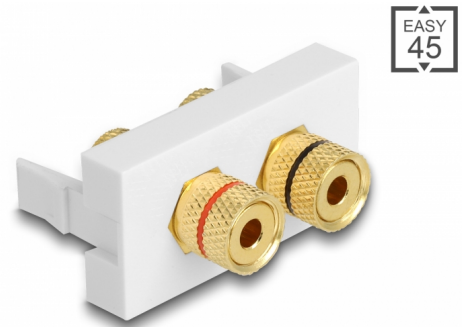
Delock Easy 45 Module 2 x binding post, red / black ring 22.5 x 45 mm

Description

This Easy 45 module by Delock is designed to provide two binding posts. The simple snap-in mechanism ensures that the cover is firmly in place and can be easily and toolless changed if necessary.

Easy 45 connects

Easy 45 is a variable, modular system that allows components such as sockets, HDMI or USB connections to be added according to your needs. The Easy 45 modules are standardised and can be mounted in various module holder or cable ducts. Easy 45 builds the interface between electrical, network and system installation and many peripheral devices such as TV, monitors, printers, laptops and much more.



Item no. 81397

EAN: 4043619813971

Country of origin: China

Package: Zip poly bag

Technical details

- Connectors:
external: 2 x binding post
internal: 2 x binding post
- Marking: red / black
- Thread type: 3/8" - 32 UNEF
- Gold-plated connectors
- Suitable for module holder Delock Easy 45
- Suitable for 45 mm cable duct with minimum depth 45 mm
- Module size: 22.5 x 45 mm
- Dimensions (LxWxH): ca. 22.5 x 45.0 x 39.0 mm
- Colour: white

System requirements

- A free module port Delock Easy 45

Package content

- Easy 45 module

Images



General

Mounting type:	Easy 45
----------------	---------

Interface

Connector 1:	2 x Polklemme
Connector 2:	2 x Polklemme

Physical characteristics

Length:	45 mm
Width:	22.5 mm
Height:	39 mm
Colour:	RAL 9003 Weiß