

Delock Easy 45 Module RCA female to RJ45 female port 22.5 x 45 mm

Description

This Easy 45 module by Delock is designed to provide a RCA female port. The simple snap-in mechanism ensures that the module is firmly in place and can be easily removed if necessary. A pre-installed network cable e.g. can be connected or extended to the RJ45 socket.

Easy 45 connects

Easy 45 is a variable, modular system that allows components such as sockets, HDMI or USB connections to be added according to your needs. The Easy 45 modules are standardised and can be mounted in various module holder or cable ducts. Easy 45 builds the interface between electrical, network and system installation and many peripheral devices such as TV, monitors, printers, laptops and much more.



Note

Integration into the existing network is not possible with this module. The RCA connector can be extended or connected with a network cable.

Specification

- Connectors:
 - external: 1 x RCA female
 - internal: 1 x RJ45 jack
- Material: ABS plastic
- Suitable for module holder Delock Easy 45
- Suitable for 45 mm cable duct with minimum depth 45 mm
- Module size: 22.5 x 45 mm
- Dimensions (LxWxH): ca. 22.5 x 45.0 x 39.0 mm
- Colour: white

System requirements

- A free module port Delock Easy 45

Package content

- Easy 45 module

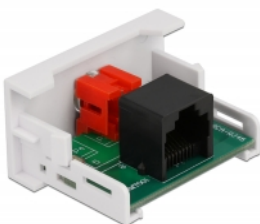
Item no. 81340

EAN: 4043619813407

Country of origin: China

Package: White Box

Images



General	
Mounting type:	Easy 45
Interface	
Connector 1:	1 x RJ45 jack
Connector 2:	1 x RCA female
Physical characteristics	
Length:	45 mm
Width:	22.5 mm
Height:	39 mm
Colour:	RAL 9003 Weiß