

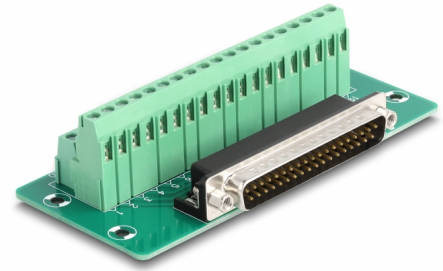
# Delock D-Sub 37 pin male to Terminal Block for DIN rail

## Description

This terminal block adapter by Delock can be used to connect wires with stripped ends.

### DIN rail mounting

With the clips included in the delivery content, the adapter can be attached to a 15 mm or 35 mm wide DIN rail.



**Item no. 66913**

EAN: 4043619669134

Country of origin: China

Package: White Box

## Specification

- Connectors:
  - 1 x D-Sub 37 pin male
  - 1 x 38 pin terminal block
- Pin assignment: 1:1
- Pitch: 5.00 mm
- Useable for a cable gauge from 24 to 12 AWG
- DIN rail mounting: 15 mm and 35 mm
- Operating temperature: -40 °C ~ 100 °C
- Dimensions (LxWxH): ca. 116 x 51 x 30 mm

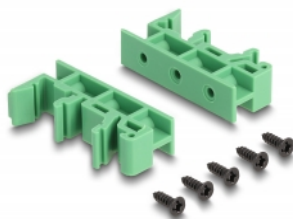
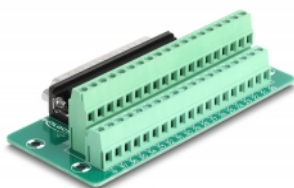
## System requirements

- A free D-Sub 37 pin female
- 15 mm or 35 mm DIN rail

## Package content

- Adapter
- 2 x DIN rail clip
- 5 x screws

## Images



## General

|                |                                    |
|----------------|------------------------------------|
| Mounting type: | DIN rail mounting: 15 mm and 35 mm |
|----------------|------------------------------------|

## Interface

|              |                           |
|--------------|---------------------------|
| Connector 1: | 1 x D-Sub 37 pin male     |
| Connector 2: | 1 x 38 pin terminal block |

## Technical characteristics

|                        |                 |
|------------------------|-----------------|
| Operating temperature: | -40 °C ~ 100 °C |
|------------------------|-----------------|

## Physical characteristics

|                  |              |
|------------------|--------------|
| Pitch distance:  | 5.00 mm      |
| Conductor gauge: | 24 to 12 AWG |
| Length:          | 116 mm       |
| Width:           | 51 mm        |
| Height:          | 30 mm        |