

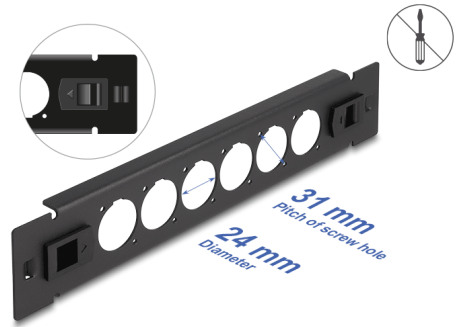
# Delock 10" D-Type Patch Panel 6 port tool free black

## Description

This patch panel by Delock can be mounted in a 10" rack. With its standardized dimensions, it is suitable for easy mounting of 6 D-type modules.

## Installation without tools

The special feature of this patch panel is that no tools are required for installation in a network cabinet. The integrated mounting clips can simply be pushed outwards to lock the panel in place.



**Item no. 66899**

EAN: 4043619668991

Country of origin: China

Package: Box

## Specification

- 6 D-type ports 24 x 19 mm
- For mounting in 10" racks, 1U
- Material: metal
- Colour: black
- Dimensions (LxWxH): ca. 254.0 x 44.4 x 12.5 mm

## Package content

- D-type patch panel

## Images



## General

|                |       |
|----------------|-------|
| Mounting type: | 10 in |
|----------------|-------|

## Physical characteristics

|           |         |
|-----------|---------|
| Material: | metal   |
| Length:   | 254 mm  |
| Width:    | 44.5 mm |
| Height:   | 12.5 mm |
| Colour:   | black   |