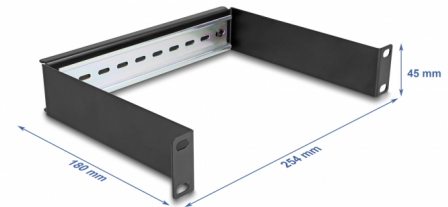


Delock 10" DIN rail Panel 1U black

Description

This DIN rail panel by Delock can be mounted into a 10" cabinet and can be used as a mounting system, e.g. for power supplies, screw terminals and interface modules.



Item no. 66897

EAN: 4043619668977

Country of origin: China

Package: Box

Technical details

- For mounting in 10" network cabinet, 1U
- DIN rail 35 mm
- Material: metal
- Colour: black
- Dimensions (LxWxH): ca. 254 x 180 x 45 mm

Package content

- 10" DIN rail panel
- 4 x screws
- 4 x caged nut
- 4 x washers

Images



General

Mounting type:	10 in
----------------	-------

Physical characteristics

Material:	metal
Length:	254 mm
Width:	180 mm
Height:	45 mm
Colour:	black