

# Delock D-Sub15 female to Terminal Block with Enclosure

## Description

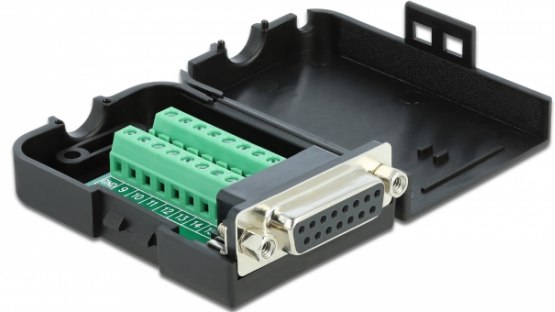
This terminal block adapter by Delock can be used to connect bare wires. Thus the adapter is not only convenient for special industry applications, but also for the hobby area, e.g. railway modelling.

### Protection by enclosure

The plastic enclosure protects the PCB from dirt and damage.

### Strain relief

The screw-on strain relief fixes the cable in the enclosure.



## Specification

- Connectors:
  - 1 x serial D-Sub15 female (2 rows) with nuts
  - 1 x 16 pin terminal block
- Pin assignment: 1:1
- Pitch: 3.81 mm
- Useable for a cable gauge from 26 to 18 AWG
- Operating temperature: -20 °C ~ 105 °C
- Dimensions (LxWxH): ca. 71 x 42 x 21 mm

## System requirements

- A free D-Sub15 male port

## Package content

- Adapter
- 1 x strain relief
- 2 x locking screws

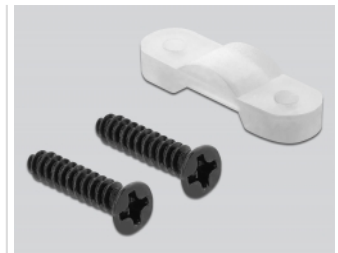
## Item no. 66569

EAN: 4043619665693

Country of origin: CHINA

Package: Zip poly bag

## Images



Interface	
Connector 1:	1 x serial Sub-D 15 pin female
Connector 2:	1 x 16 pin terminal block
Technical characteristics	
Operating temperature:	-20 °C ~ 105 °C
Physical characteristics	
Pitch distance:	3.81 mm
Conductor gauge:	26 - 18 AWG
Length:	78 mm
Width:	42 mm
Height:	21 mm