

Delock DIN Rail Stainless Steel with End Stop for Wall Mounting

Description

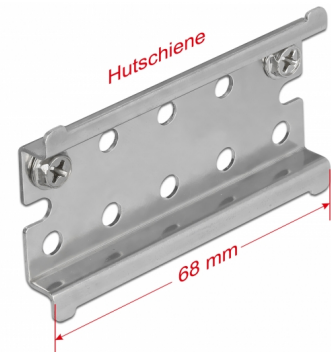
This DIN rail by Delock is suitable for the mounting onto a wall.

To be used for different devices

The DIN rail can be screwed onto the wall by the mounting holes and can be used as a mounting system e.g. for converters or terminals.

Mechanical Stopper

The end stop serves to secure the products which are fastened to the DIN rail. Thus, they can not be pulled out at the side.



Item no. 66083

EAN: 4043619660834

Country of origin: Taiwan,
Republic of China

Package: Zip poly bag

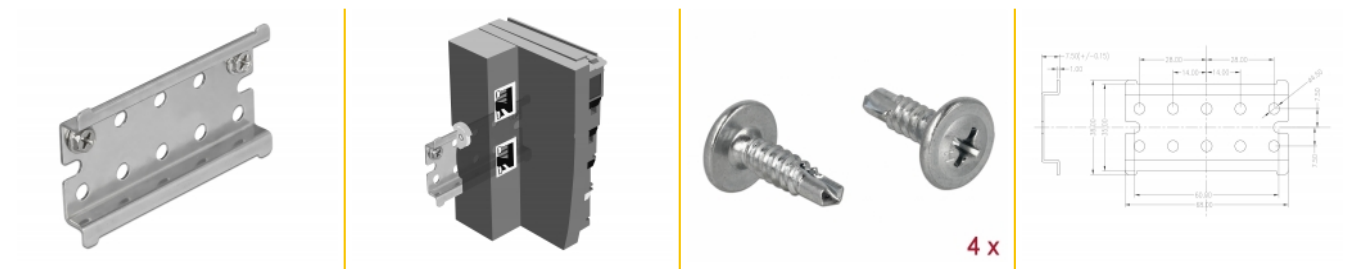
Specification

- 35 mm DIN rail
- 10 x mounting holes
- Mounting hole diameter: 4.5 mm
- Pitch of screw hole: ca. 14 mm
- Material: stainless steel
- Dimensions (LxWxH): ca. 68.0 x 38.0 x 7.5 mm

Package content

- 1 x DIN rail
- 4 x screw

Images



General

Mounting type:	Wall mounting
----------------	---------------

Physical characteristics

Material:	stainless steel
Length:	68.0 mm
Width:	38.0 mm
Height:	7.5 mm