

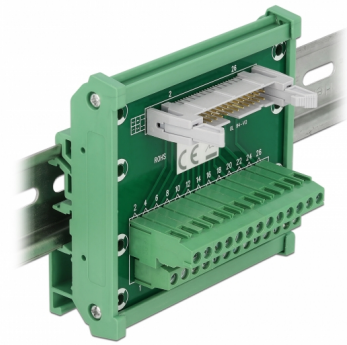
Interface Module for DIN Rail with 26 pin Terminal Block and 26 pin IDC Pin Header male

Description

This interface module by Delock connect the 26 pin terminal block with the 26 pin IDC pin header male and serves as an interface for electrical wiring of electronic devices.

DIN Rail Mounting

This interface module can be mounted on a 15 mm or 35 mm DIN rail.



Item no. 66051

EAN: 4043619660513

Country of origin: China

Package: Retail Box

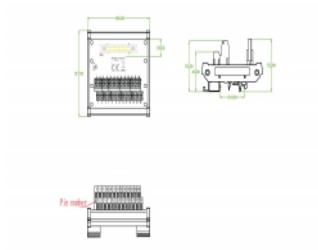
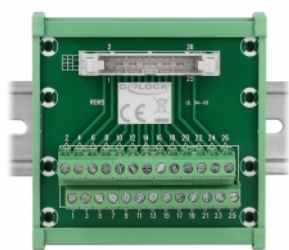
Specification

- Connectors:
 - 1 x 26 pin terminal block screw terminal
 - 1 x 26 pin IDC pin header with lock
- Useable for a cable gauge from 26 to 14 AWG
- Operating temperature: -20 °C ~ 105 °C
- DIN rail mounting: 15 mm and 35 mm
- 8 x mounting holes
- Colour: green
- Dimensions (LxWxH): ca. 88.0 x 85.0 x 50.0 mm

Package content

- 1 x interface module

Images



General

| | |
|-------------------------------|------------------------------------|
| Suitable for conductor gauge: | 26 - 14 AWG |
| Mounting type: | DIN rail mounting: 15 mm and 35 mm |

Interface

| | |
|--------------|--|
| Connector 1: | 1 x 26 pin terminal block screw terminal |
| Connector 2: | 1 x 26 pin IDC pin header with lock |

Technical characteristics

| | |
|------------------------|-----------------|
| Operating temperature: | -20 °C ~ 105 °C |
|------------------------|-----------------|

Physical characteristics

| | |
|---------|---------|
| Length: | 88.0 mm |
| Width: | 85.0 mm |
| Height: | 50.0 mm |
| Colour: | green |