

Terminal block set for DIN rail 10 pin with screw lock

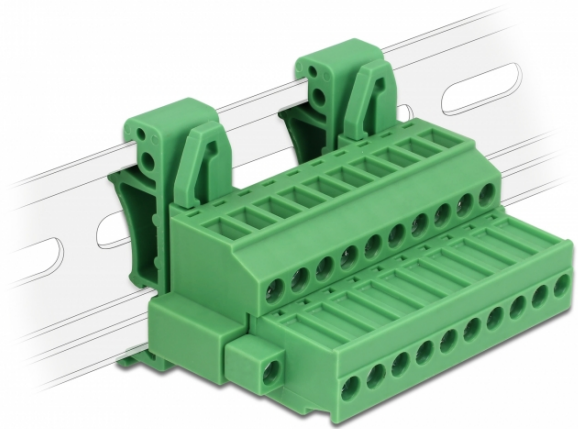
Description

This terminal block set by Delock is suitable for the mounting on a DIN rail. Thus data or power cables can be connected via the terminal block.

DIN Rail Mounting

This terminal block set can be fixed on a DIN rail with a width of 35 mm.

[Terminal Block Set for DIN rail \(Video\)](#)



Specification

- Connectors:
 - Terminal block:
 - 1 x 10 pin terminal block male
 - 1 x 10 pin terminal block
 - Connection terminal:
 - 1 x 10 pin terminal block female
 - 1 x 10 pin terminal block
- Pitch: 5.08 mm
- Environmental temperature: -40 °C ~ 105 °C
- Useable for a cable gauge range from 24 to 12 AWG
- DIN rail mounting: 35 mm
- Material: plastic
- Colour: green
- Dimensions (LxWxH): ca. 42.50 x 34.90 x 61.95 mm

Item no. 65941

EAN: 4043619659418
Country of origin: China
Package: Zip poly bag

Package content

- Terminal block
- DIN rail clip
- Connection terminal

Images



General	
Suitable for conductor gauge:	24 - 12 AWG
Mounting type:	DIN rail 35 mm
Interface	
Connector 1:	1 x 10 pin terminal block male
Connector 2:	1 x 10 pin terminal block
connector 3:	1 x 10 pin terminal block female
connector 4:	1 x 10 pin terminal block
Technical characteristics	
Storage temperature:	-40 °C ~ 105 °C
Physical characteristics	
Pitch distance:	5.08 mm
Housing material:	Plastic
Length:	42.50 mm
Width:	34.90 mm
Height:	61.95 mm
Colour:	green