

Delock Adapter EASY-USB 2.0-A male > USB 2.0-A female

Description

This adapter by Delock with EASY-USB male can be plugged into the USB-A female port in both directions. You can expand your existing USB-A plug with this adapter. Thus the male port can be used both-sided and make the plug in easily.



Specification

- Connector: USB 2.0 type A reversible male > USB 2.0 type A female
- USB-A male port usable in both directions
- Port saver
- Gold-plated contact
- Colour: black
- Dimensions (LxWxH): ca. 37 x 18 x 11 mm

System requirements

- PC or notebook with one free USB type A port

Package content

- Adapter

Item no. 65520

EAN: 4043619655205

Country of origin: China

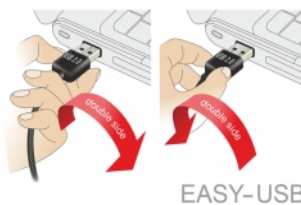
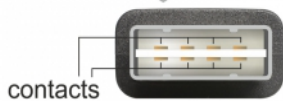
Package: • Poly bag



Images

EASY-USB

PCB with both sided contacts



EASY-USB