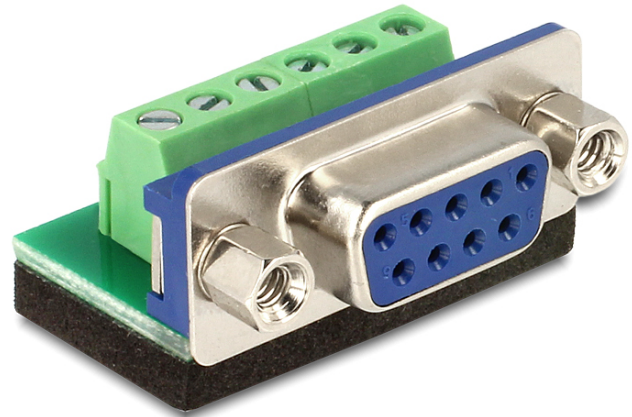


## Delock Adapter Sub-D 9 pin female > Terminal block

### Description

This Serial to Terminal Block adapter is made for special industrial application e.g. for connecting single wires with open cable heads.



### Specification

- Connector:
  - Serial Sub-D 9 pin female
  - 6 pin Terminal Block
- Bottom side with isolating, antislip pad
- Pitch 3.81
- Dimension (LxWxH): ca. 32 x 22.5 x 11 mm

### System requirements

- One free Sub-D 9 pin male port

### Package content

- Adapter

Item no. 65498

EAN: 4043619654987

Country of origin: China

Package: • Poly bag



### Images

