

# Delock M.2 Docking Station for 2 x M.2 NVMe PCIe SSD with Clone function

## Description

This M.2 docking station by Delock enables the installation of **two M.2 PCIe NVMe SSDs** and it can be connected via USB to the PC or laptop. The included USB cable allows the connection to a free USB-C™ port.

### M.2 PCIe SSD clone function

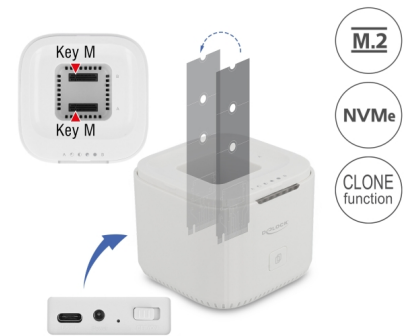
The clone function enables to **copy the content of one SSD to another** without using a PC.

### Good cooling

A **fan in the bottom area** of the docking station ensures sufficient cooling of the SSDs used, so that the operation also works without problems with closed lid.

### Suitable as transport box

Due to the elegant design and the specially designed lid, the docking station is also suitable as a **transport box for two M.2 memories**.



**Item no. 63331**

EAN: 4043619633319

Country of origin: China

Package: Retail Box

## Specification

- Connectors:
  - 1 x SuperSpeed USB 10 Gbps (USB 3.2 Gen 2) USB Type-C™ female
  - 2 x 67 pin M.2 key M slot
  - 1 x DC jack
- Chipset: Asmedia ASM2362
- Supports M.2 modules with key M or key B+M based on PCIe (NVMe)
- Supports NVM Express (NVMe)
- Data transfer rate up to 10 Gbps
- Supports UASP
- LED indicator for power, access and copy status
- Function key:
  - 1 x Clone button
  - 1 x On / Off switch
- Dimensions (LxWxH): ca. 132 x 93 x 93 mm

- Hot Plug, Plug & Play
- 

## Power supply specification

- Wall power supply
  - Input: AC 100 ~ 240 V / 50 ~ 60 Hz / 0.8 A
  - Output: 12 V / 2 A
  - Ground outside, plus inside
  - Dimensions:
    - inside:  $\varnothing$  ca. 2.5 mm
    - outside:  $\varnothing$  ca. 5.5 mm
    - length: ca. 10 mm
- 

## System requirements

- Android 9.0 or above
  - Chrome OS 83.0 or above
  - iPad Pro (2018)
  - Linux Kernel 5.4 or above
  - Mac OS 10.15.6 or above
  - Windows 8.1/8.1-64/10/10-64
  - Device with a free USB Type-C™ port or with a free Thunderbolt™ 3 port
- 

## Package content

- M.2 docking station
- Cable USB-C™ male to USB-C™ male, length ca. 1 m
- External power supply 12 V / 2 A
- User manual

## Images



## General

Function:	Clone Function
Supported operating system:	Android 9.0 or above Chrome OS 83.0 or above Linux Kernel 5.4 or above Mac OS 10.15.6 or above Windows 10 32-Bit Windows 10 64-Bit Windows 8.1 32-Bit Windows 8.1 64-Bit iPad Pro (2018)
Slot:	PCIe
Maximum height of the components on the module:	1.5 mm application of double-sided assembled modules supported

## Interface

Connector 1:	1 x USB 10 Gbps USB Type-C™ female
Connector 2:	2 x 67 pin M.2 key M slot
connector 3:	1 x DC jack

## Technical characteristics

Data transfer rate:	10 Gbps
---------------------	---------

## Physical characteristics

Length:	132 mm
Width:	93 mm
Height:	93 mm
Colour:	white