

# Delock Installation housing with cable entries 200 x 100 x 70 mm grey

## Description

This empty housing by Delock can be fitted with various components, e.g. circuit boards, switches or terminal blocks and protects them from dirt, dust and moisture. The housing has IP65 protection and is ideal for outdoor use.

### With cable entries

Cable glands can be mounted on the sides of the housing to feed cables through.



## Specification

- Wall mounting
- Protection class: IP65
- 10 x cable entry
- Environmental temperature: -40 °C ~ 80 °C
- Material: ABS
- Colour: grey
- Dimensions (LxWxH): ca. 200 x 100 x 70 mm

## Item no. 60491

EAN: 4043619604913

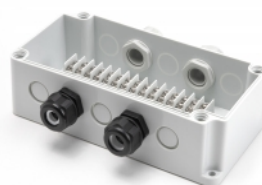
Country of origin: China

Package: White Box

## Package content

- Installation housing

## Images



General	
Mounting type:	Wall mounting
Technical characteristics	
Storage temperature:	-40 °C ~ 80 °C
Protection class:	IP65
Physical characteristics	
Material:	ABS
Length:	200 mm
Width:	100 mm
Height:	70 mm
Colour:	grey