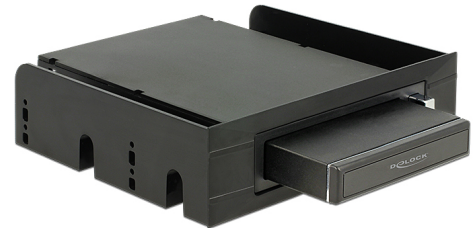


Delock 3.5" / 5.25" Mobile Rack for 2.5" SATA hard drives and SSDs

Description

This Delock mobile rack can be installed into the 3.5" or 5.25" bay of the computer. It includes an enclosure for 2.5" SATA hard disks or SSDs, which can be operated either directly in the mobile rack via SATA or externally via USB.



Note

When purchasing the optional 2.5" enclosure [item 47226](#), multiple hard drives or SSDs can be easily replaced.

Item no. 47213

EAN: 4043619472130

Country of origin: China

Package: Retail Box

Specification

- Mobile rack for installation into a 3.5" or 5.25" bay
- For internal connection via SATA or external via USB 3.0
- 2.5" enclosure:
 - internal:
 - 1 x SATA 22 pin male
 - external:
 - 1 x SATA 22 pin female
 - 1 x USB 3.0 Type Micro-B female
- 3.5" frame:
 - internal:
 - 1 x SATA 22 pin male
 - backside:
 - 1 x SATA 7 pin female
 - 1 x 4 pin power connector
- Suitable for 2.5" SATA HDD / SSD:
 - HDD height up to 9.5 mm
 - SATA HDD / SSD up to 6 Gb/s
 - HDD / SSD up to 2 TB
- Eject button on the 3.5" frame

- Data transfer rate:
USB 3.0 up to 5 Gb/s
SATA up to 6 Gb/s
- LED indicator for power and access
- Dimensions (LxWxH):
2.5" enclosure ca. 131.5 x 80 x 16.5 mm
3.5" mobile rack ca. 165 x 102 x 25.2 mm
5.25" installation frame ca. 139 x 148 x 42 mm
- Cable data:
1 x cable USB 3.0 Type Micro-B male to USB 3.0 Type-A male ca. 60 cm (incl. connector)
1 x cable SATA 7 pin male to SATA 7 pin male ca. 54 cm (incl. connector)
1 x power cable 4 pin female to 4 pin male ca. 13.5 cm (incl. connector)

System requirements

- Windows 7/7-64/8/8-64/8.1/8.1-64/10/10-64
- PC with a free 3.5" or 5.25" bay and a free SATA port
- PC or laptop with a free USB Type-A port for the 2.5" enclosure

Package content

- 2.5" enclosure
- 3.5" mobile rack
- 5.25" installation frame
- Micro USB 3.0 to USB 3.0-A cable
- 7 pin SATA cable
- 4 pin power cable
- Screwdriver
- Screws
- User manual

Images



General

| | |
|-----------------------------|--|
| Form factor: | 2.5" 3.5" 5.25" |
| Suitable for data medium: | 2.5" SSD or HDD height up to 9.5 mm |
| Supported operating system: | Windows 10 32-Bit Windows 10 64-Bit Windows 7 32-Bit Windows 7 64-Bit Windows 8 32-bit Windows 8 64-bit Windows 8.1 32-Bit Windows 8.1 64-Bit |

Technical characteristics

| | |
|---------------------|--|
| Data transfer rate: | USB 5 Gbps up to 5 Gb/s SATA up to 6 Gb/s |
|---------------------|--|

Physical characteristics

| | |
|---------|-------|
| Colour: | black |
|---------|-------|