

Delock External Enclosure for M.2 NVMe PCIe SSD with SuperSpeed USB 10 Gbps (USB 3.2 Gen 2) USB Type-C™ female

Description

This enclosure by Delock enables the installation of an M.2 PCIe NVMe SSD in 2280, 2260, 2242 and 2230 format, it can be connected via USB to the PC or laptop. The robust metal housing with cooling fins on the top ensures an optimum temperature of the memory.



Item no. 42600

EAN: 4043619426003

Country of origin: Taiwan,
Republic of China

Package: Retail Box

Specification

- Connectors:
external:
1 x SuperSpeed USB 10 Gbps (USB 3.2 Gen 2) USB Type-C™ female
internal:
1 x 67 pin M.2 key M slot
- Chipset: JMicron JMS583
- Supports M.2 modules in format 2280, 2260, 2242 and 2230 with key M or key B+M based on PCIe (NVMe)
- Maximum height of the components on the module: 1.5 mm, application of double-sided assembled modules supported
- Supports NVM Express (NVMe)
- Bootable
- Data transfer rate up to 10 Gbps
- LED indicator for power and access
- Dimensions (LxWxH): ca. 102 x 34 x 12 mm
- Hot Plug, Plug & Play

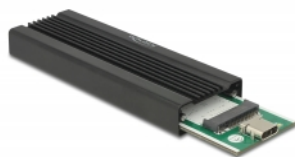
System requirements

- Chrome OS
- Linux Kernel 4.6 or above
- Mac OS 10.13.3 or above
- Windows 7/7-64/8.1/8.1-64/10/10-64/11
- PC or laptop with a free USB Type-C™ port

Package content

- External enclosure M.2
- Screwdriver
- Mounting material
- Cable USB-C™ male to USB-C™ male, length ca. 30 cm
- 1 x thermal pad
- User manual

Images



General

Function:	NVM Express (NVMe) Hot Plug Plug & Play
Internal construction:	full PCB
Supported operating system:	Chrome OS Linux Kernel 4.6 or above Mac OS 10.13.3 or above Windows 10 32-bit Windows 10 64-bit Windows 7 32-bit Windows 7 64-bit Windows 8.1 32-bit Windows 8.1 64-bit
Supported module:	M.2 modules in format 2280, 2260, 2242 and 2230 with key M or key B+M based on PCIe
Maximum height of the components on the module:	1.5 mm application of double-sided assembled modules supported

Interface

External:	1 x SuperSpeed USB 10 Gbps (USB 3.2 Gen 2) USB Type-C™ female
Internal:	1 x 67 pin M.2 key M slot

Technical characteristics

Chipset:	JMicron JMS583
Data transfer rate:	up to 10 Gbps

Physical characteristics

Housing material:	metal
Cable length:	30 cm
Length:	102 mm
Width:	34 mm

Height:	12 mm
Colour:	black