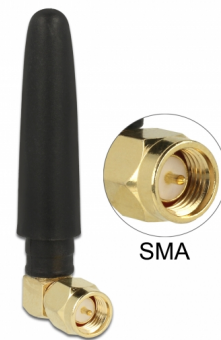


Delock WLAN 802.11 b/g/n Antenna SMA plug 90° 2 dBi omnidirectional fixed with flexible material black

Description

This antenna by Delock allows the usage of the 2.4 GHz band indoors. It is completely compatible to Bluetooth, WLAN 2.4 GHz, ZigBee 2.4 GHz, ISM 2.4 GHz.



Item no. 12624

EAN: 4043619126248

Country of origin: China

Package: Zip poly bag

Specification

- Connector: 1 x SMA plug 90°
- Bluetooth, WLAN 2.4 GHz, ZigBee 2.4 GHz, ISM
- Frequency range: 2.4 - 2.5 GHz
- Antenna gain: 2 dBi
- Impedance: 50 Ohm
- VSWR: 2.5
- Polarisation: linear, vertical
- Operating temperature: -40 °C ~ 85 °C
- Housing material: rubber
- Colour: black
- Antenna length: ca. 5 cm

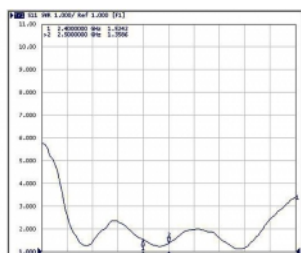
System requirements

- Device with a free SMA jack

Package content

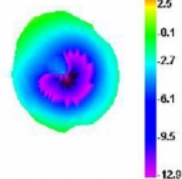
- Antenna

Images

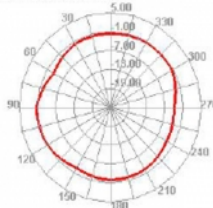


| Freq (MHz) | Effi (%) | Effi (dB) | Gain (dBi) | Gain (dBd) |
|---------------|-------------|--------------|---------------|---------------|
| 2400 | 70,99 | -1,49 | 4,17 | 2,02 |
| 2410 | 69,47 | -1,58 | 3,91 | 1,76 |
| 2420 | 69,27 | -1,59 | 3,83 | 1,68 |
| 2430 | 69,19 | -1,60 | 3,67 | 1,52 |
| 2440 | 68,08 | -1,67 | 3,54 | 1,39 |
| 2450 | 69,57 | -1,58 | 3,58 | 1,43 |
| 2460 | 70,66 | -1,51 | 3,56 | 1,41 |
| 2470 | 71,76 | -1,44 | 3,57 | 1,42 |
| 2480 | 72,30 | -1,41 | 3,50 | 1,35 |
| 2490 | 73,39 | -1,34 | 3,56 | 1,41 |
| 2500 | 73,47 | -1,34 | 3,60 | 1,45 |

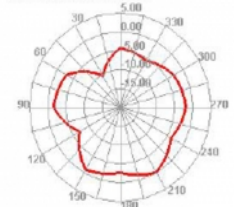
2400.000MHz



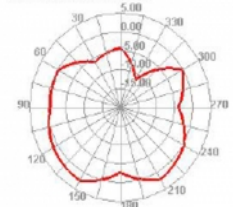
2400.000MHz H



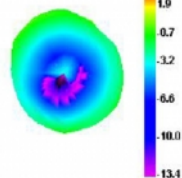
2400.000MHz E1



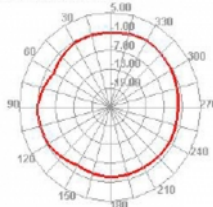
2400.000MHz E2



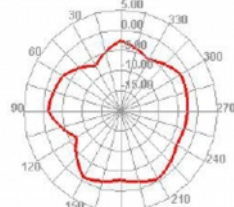
2450.000MHz



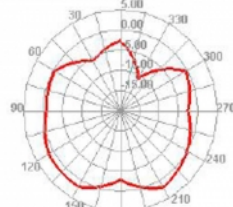
2450.000MHz H



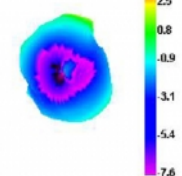
2450.000MHz E1



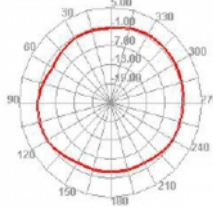
2450.000MHz E2



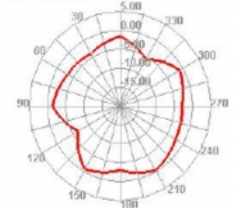
2500.000MHz



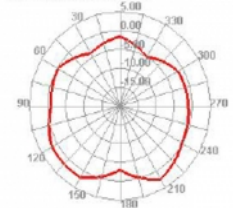
2500.000MHz H



2500.000MHz E1



2500.000MHz E2



General

| | |
|----------------------|-----|
| Suitable for indoor: | yes |
|----------------------|-----|

Technical characteristics

| | |
|------------------------|----------------|
| Frequency range: | 2.4 - 2.5 GHz |
| Antenna gain: | 2 dBi |
| Impedance: | 50 Ω |
| Operating temperature: | -40 °C ~ 85 °C |
| Polarisation: | vertical |
| VSWR: | 2.5 |

Physical characteristics

| | |
|-------------------|----------------------------------|
| Antenna type: | dipol antenna omnidirectional |
| Housing colour: | black |
| Housing material: | rubber |
| Length: | 50 mm |