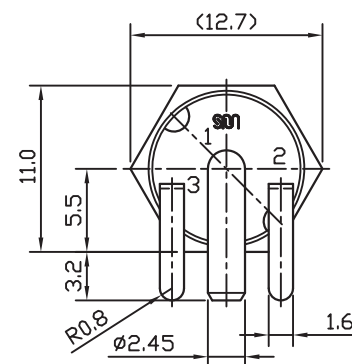
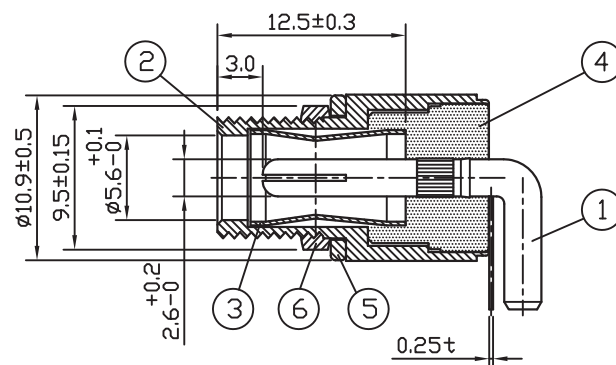
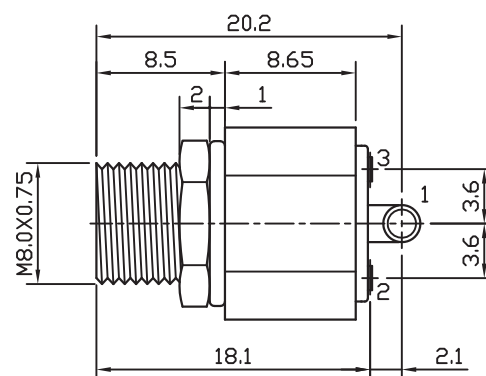


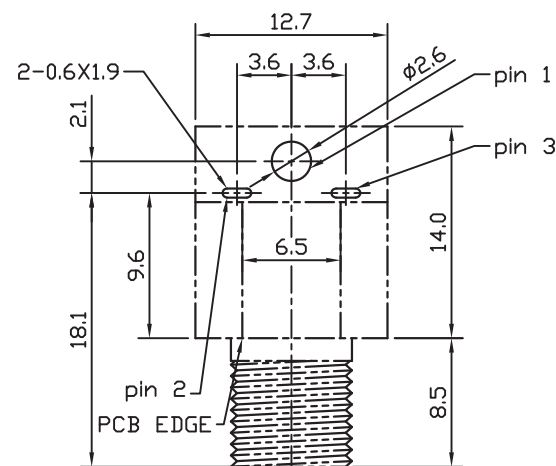
DIMENSIONS RANGE	TOLERANCE UNLESS SPECIFIED
0.5≤X<1	±0.1
1≤X≤6	±0.15
6<X≤18	±0.2
18<X≤50	±0.3



REAR VIEW



BOTTOM VIEW



TOP VIEW

PCB LAYOUT

PIN 組立 : 159-065

符合 RoHs 標準

- 耐電壓: AC 500V, 1分鐘
- 絶縁抵抗: 100MΩ 以上 (DC 500V)
- 接觸抵抗: 30mΩ 以下
- 插入力: 3.5kg 以下  
拔出力: 0.3~3kg

**DELOCK**

we move the world

Title: Connector DC 5.5 x 2.5 mm female bulkhead soldering version - Hexagon 20 V / 10 A

Date	2023 / 11 / 30	Item no.	90182
Unit	mm	Barcode	4043619901821
Projection		File No.	88276
Rev	A		