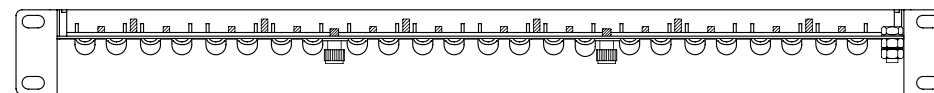


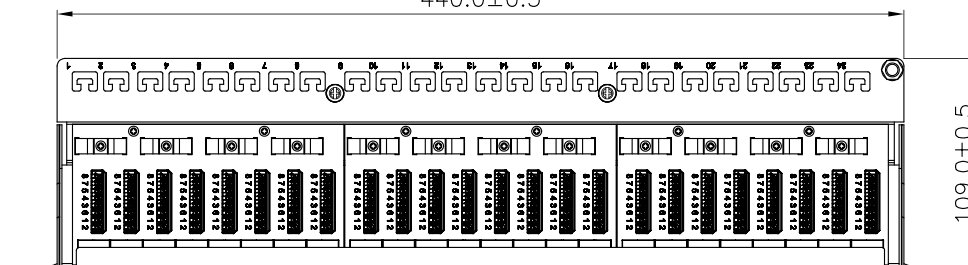
KRONE 45° IDC

RJ45  
RIGHT ANGLE JACK

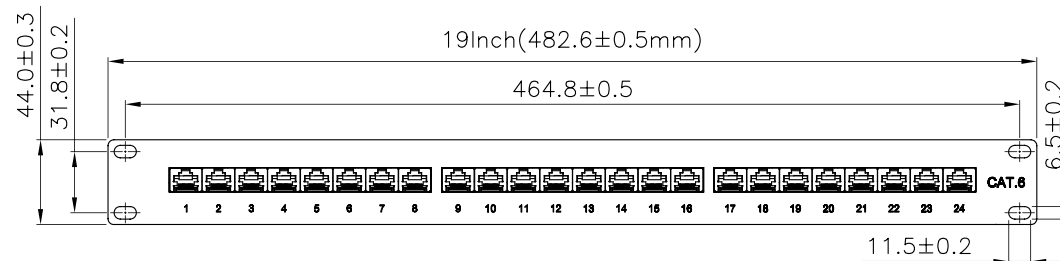
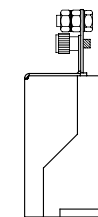
SCALE 1/4



440.0±0.5



109.0±0.5



19Inch(482.6±0.5mm)

464.8±0.5

44.0±0.3  
31.8±0.2

6.5±0.2

11.5±0.2

## Specification :

### Material :

1. Panel : SECC, 1.2 mm thickness with optional color painted.
2. RJ45 Jack :
  - 2-1. Housing : PBT+Glass Fiber, UL 94V-0.
  - 2-2. Contact Bracket : PBT+Glass Fiber, UL 94V-0.
3. RJ45 Jack Contact :
  - 3-1. Material : Phosphor Bronze with Nickel plated.
  - 3-2. Finish : 50 micro-inch Gold plated on Plug contact area.
4. RJ45 Jack Shield : Bronze With Nickel plated.
5. IDC :
  - 5-1. Housing : PC+Glass Fiber, UL 94V-2.
  - 5-2. Terminal : Phosphor Bronze with Tin plated.
6. PCB : FR4, UL 94V-0.

### Performance :

- a. T568A & T568B wiring printing on IDC.
- b. Insertion force : 30N max. (IEC 60603-7-5)
- c. Retention strength : 7.7 kg between Jack and Plug.
- d. Operating temperature : -10°C to 60°C. (ISO/IEC 11801, ANSI/TIA/EIA568 B.2)
- e. Life(mating cycles) :
  - \*Jack : 750 cycles min. (ISO/IEC 11801, IEC 60603-7-5)
  - \*IDC : Suitable for 22-26 AWG stranded and solid wire, Compatible with Krone punch down tool.
- f. The Cat.6 transmission performance is in compliance with the ANSI/TIA/EIA 568 B.2-1 standard.

**DELOCK®**  
we move the world

Title: 19 Patch Panel 24 Port Cat.6

Dat	2015 / 09 / 11	Item no.	43298
Unit	mm	Barcode	4043619432981
Projection		File No.	
Rev	A		