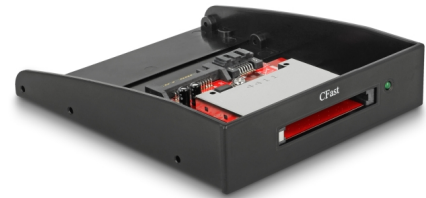


# Delock SATA 3.5" Card Reader for CFast

## Description

This Card Reader can be installed into a 3.5" bay of a PC and will be connected to a free SATA port of the motherboard. The CFast card works as additional memory as well as a hard drive for an operating system which is also bootable.



### Item no. 91496

EAN: 4043619914968

Country of origin: Taiwan,  
Republic of China

Package: Retail Box

## Specification

- Connector:
  - external:
    - 1 x CFast slot
  - internal:
    - 1 x SATA 7 pin male
    - 1 x SATA 15 pin male
- Push to push CFast socket
- Bootable
- Supports CFast type I / II memory cards
- Supports CFast 1.0 and 2.0
- For installation into an available 3.5" bay
- OS independent, no driver installation necessary

## System requirements

- PC with one free 3.5" bay
- A free SATA port
- SATA connecting cable

- Power supply with a free SATA power connector

---

## Package content

- Card Reader SATA to CFast
- Screws
- User manual

---

## Images



## General

Form factor:	3.5"
Supported operating system:	OS independent, no driver installation necessary
Slot:	Push to push
Supported memory card:	CFast 1.0 and 2.0 CFast type I / II

## Interface

External:	1 x CFast slot
Internal:	1 x SATA 15 pin plug 1 x SATA 6 Gb/s 7 pin plug