

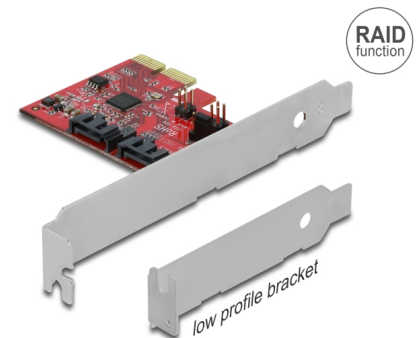
Delock 2 port SATA PCI Express x2 Card with RAID 1 - mirroring existing data

Description

This PCI Express card by Delock expands the PC by **two internal SATA ports**. Different devices such as SSDs, hard drives, DVD-drives etc. can be connected to the card.

RAID 1

The special feature of this PCIe card is that an SSD / HDD, which already contains data, does not need to be formatted in order to build a RAID 1 group with a second SSD / HDD. The data of the **existing SSD / HDD** will be mirrored to a new one.



Item no. 90406

EAN: 4043619904068

Country of origin: Taiwan,
Republic of China

Package: Retail Box

Specification

- Connectors:
2 x SATA 6 Gb/s 7 pin plug
1 x PCI Express x2, V2.0
4 x 2 pin header for LED
- Chipset: Asmedia ASM1062R
- Supports RAID 1
- Jumper for RAID mode ON / OFF
- Supports Native Command Queuing (NCQ)
- Supports S.M.A.R.T.
- Supports TRIM
- Supports DevSleep
- Hot Plug

System requirements

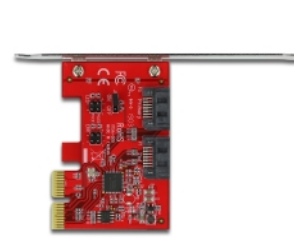
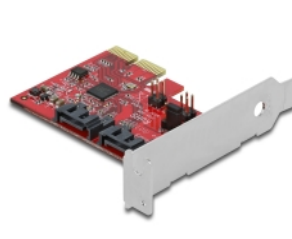
- Linux Kernel 3.3 or above
- Windows 7/7-64/8.1/8.1-64/10/10-64/11

- PC with one free PCI Express x4 / x8 / x16 / x32 slot

Package content

- PCI Express card
- Low profile bracket
- Driver CD
- User manual

Images



General

Form factor:	Low Profile
Supported operating system:	Linux Kernel 3.3 or above Windows 10 32-Bit Windows 10 64-Bit Windows 7 32-Bit Windows 7 64-Bit Windows 8.1 32-Bit Windows 8.1 64-Bit

Interface

Connector 1:	1 x PCI Express x2, V2.0
Connector 2:	2 x SATA 6 Gb/s 7 pin plug
connector 3:	4 x 2 pin pin header for LED

Technical characteristics

Chipset:	Asmedia ASM1062R
RAID function:	1

Physical characteristics

Slot bracket:	Low Profile standard
---------------	-------------------------