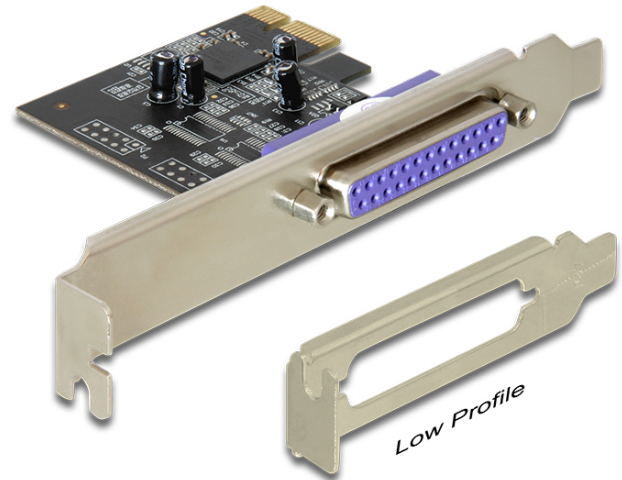


## Delock PCI Express Card > 1 x Parallel

### Description

The Delock PCI Express card expands your PC by one external parallel port. You can connect devices like scanner, printer etc. to the card.



### Specification

- Connector:  
external: 1 x Parallel DB25 female  
internal: 1 x PCI Express x1, V1.1
- Chipset: Oxford
- Data transfer rate up to 2.5 Mb/s
- SPP, EPP, ECP compatible to IEEE 1284

### System requirements

- Windows  
XP/Server-2003/Server-2003-64/Vista/Vista-64/7/7-64/8/8-64/8.1/8.1-64/10/10-64
- PC with one free PCI Express slot

### Package content

- PCI Express card
- Low profile bracket
- Driver CD
- User manual

### Item no. 89219

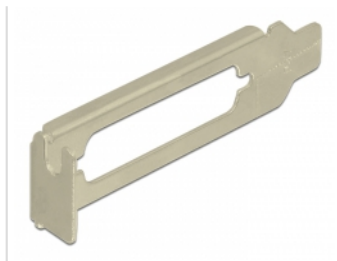
EAN: 4043619892198

Country of origin: China

Package: Retail Box



### Images



General	
Form factor:	Low Profile
Specification:	IEEE1284 PCIe 1.1 SPP, EPP, ECP
Supported operating system:	Windows Vista 32-bit Windows Vista 64-bit Windows 7 32-bit Windows 7 64-bit Windows 8 32-bit Windows 8 64-bit Windows 8.1 32-bit Windows 8.1 64-bit Windows 10 32-bit Windows 10 64-bit Windows Server 2003 32-bit Windows Server 2003 64-bit Windows Server 2012 R2 Windows Server 2012
Slot:	PCIe
Interface	
External:	1 x Parallel DB25 female
Internal:	1 x PCI Express x1, V1.1
Technical characteristics	
Chipset:	OXPCIe952
Data transfer rate:	2.5 MBps
Data transmission:	Bi-directional
Physical characteristics	
Slot bracket:	low profile standard
Length:	65 mm
Width:	59 mm
Height:	11 mm