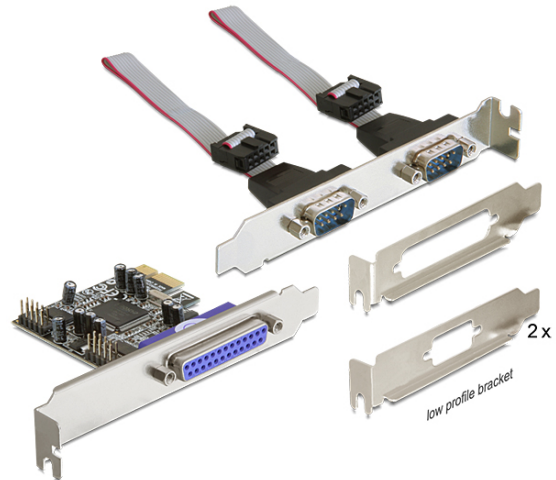


Delock PCI Express Card > 2 x Serial RS-232 + 1 x Parallel

Description

The PCI Express card by Delock expands a PC by two external serial ports as well as one external parallel port. Different devices such as scanner, printer, mouse etc. can be connected to this card. By using the included low profile brackets, the PCI Express card can be also installed into a Mini-PC.



Specification

- Connectors:
 - external:
 - 2 x serial RS-232 DB9 male (separate rear bracket)
 - 1 x Parallel DB25 female
 - internal:
 - 2 x 9 pin COM port pin header male
 - 1 x PCI Express x1, V1.1
- Chipset: Moschip
- Data transfer rate:
 - serial up to 230.4 Kb/s
 - parallel up to 1.5 Mb/s
- FIFO: 256 byte
- SPP, PS2, EPP, ECP compatible to IEEE 1284
- Compatible with 16C550 UART

System requirements

- Windows XP/Server-2003/Vista/7/8.1/10
- PC with one free PCI Express slot and one rear slot

Package content

- PCI Express card
- Slot bracket
- 3 x low profile bracket
- Driver CD
- User manual

Item no. 89129

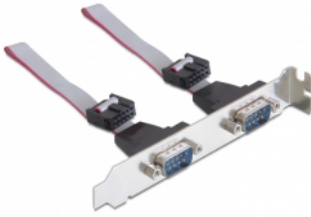
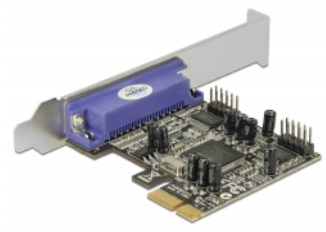
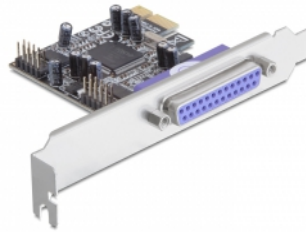
EAN: 4043619891290

Country of origin: China

Package: Retail Box



Images



General	
Form factor:	Low Profile
Specification:	RS-232 IEEE1284 SPP, EPP, ECP, BPP PCIe 1.1
Supported operating system:	Windows 7 32-bit Windows 7 64-bit Windows 8.1 32-bit Windows 8.1 64-bit Windows 10 32-bit Windows 10 64-bit Windows Server 2003 32-bit Windows Server 2003 64-bit Windows Server 2012 R2 Windows Server 2012
Slot:	PCIe
Interface	
Connector 1:	2 x Serial RS-232 DB9 Plug
Connector 2:	1 x Parallel DB25 female
Internal:	1 x PCI Express x1, V1.1
Technical characteristics	
Chipset:	Moschip MCS9901CV
Data transfer rate:	RS-232 up to 230 kbps LPT up to 1.5 MBps
FIFO:	2 x 256 Byte
Data transmission:	Bi-directional
UART:	16C550
Physical characteristics	
Cable length incl. connector:	20 cm
Slot bracket:	low profile standard
Length:	65 mm
Width:	59 mm
Height:	12 mm