

# Delock LTE Antenna I-PEX Inc., MHF® I plug 2 - 3 dBi 1.13 10 cm PCB internal self adhesive

## Description

This LTE antenna by Delock allows the usage of different LTE bands inside and outside. It is completely compatible to GSM, UMTS, LTE, LoRa, NB-IoT, ISM, Bluetooth, WLAN 2.4 GHz, ZigBee, DECT and Z-Wave.



**Item no. 88988**

EAN: 4043619889884

Country of origin: Taiwan,  
Republic of China

Package: Zip poly bag

## Specification

- Connector: 1 x I-PEX Inc., MHF® I plug
- Frequency range:  
690 - 960 MHz  
1710 - 2700 MHz
- GSM, UMTS, LTE, ZigBee, Z-Wave, NB-IoT, WLAN 2,4 GHz, Bluetooth, ISM, DECT, LoRa
- Antenna gain: 2 - 3 dBi
- Impedance: 50 Ohm
- VSWR: 1.5
- Mounting type: self adhesive
- Operating temperature: -10 °C ~ 55 °C
- Cable type: coaxial
- Cable type: 1.13
- Cable colour: grey
- Cable diameter: ca. 1.13 mm
- Cable attenuation: 3.2 dB @ 2.4 GHz per meter
- Smallest bending radius: 4.5 mm
- Length incl. connectors (L): ca. 10 cm

- Dimensions (LxWxH): ca. 96.0 x 14.0 x 0.9 mm

---

## System requirements

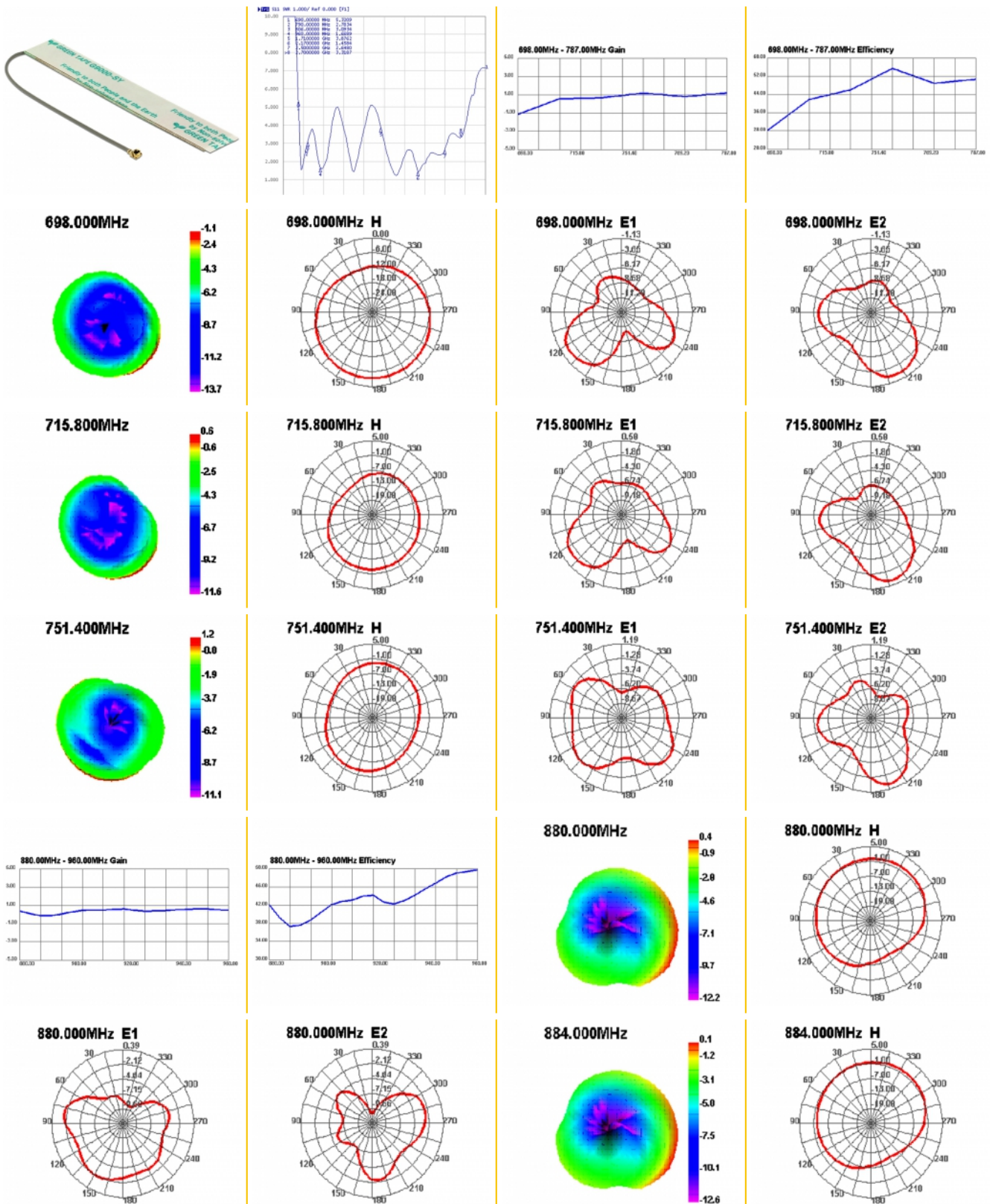
- Device with one free I-PEX Inc., MHF® I port

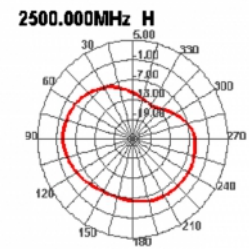
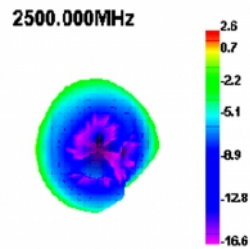
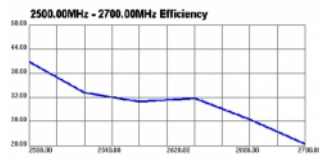
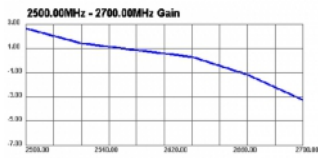
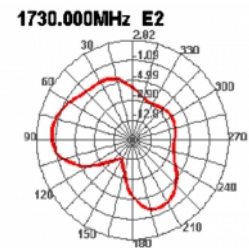
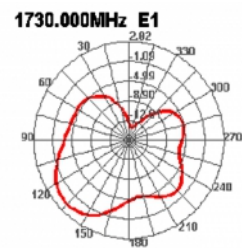
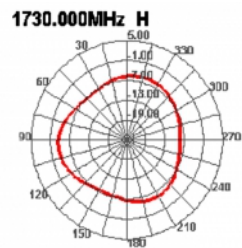
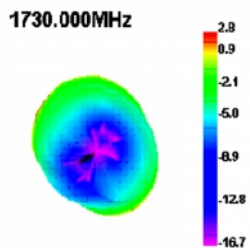
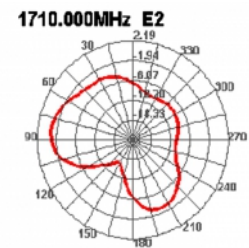
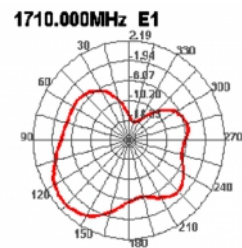
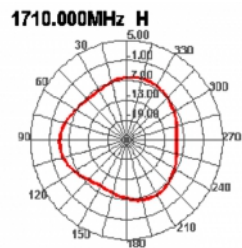
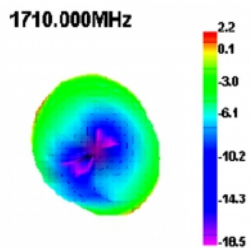
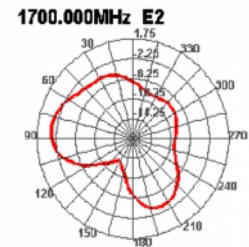
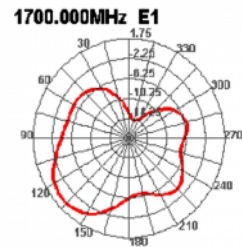
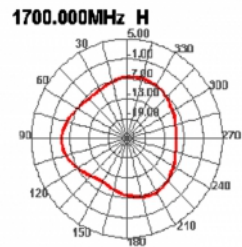
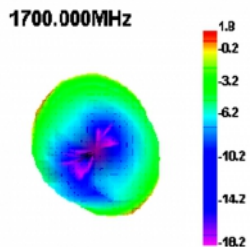
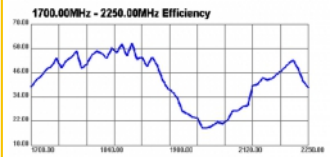
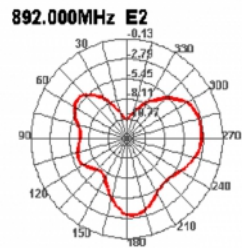
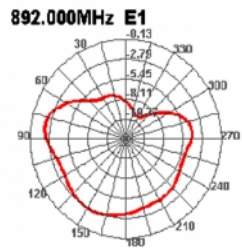
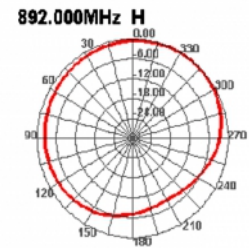
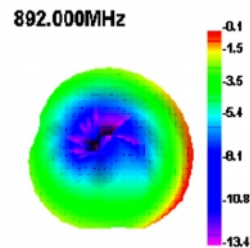
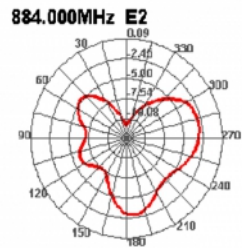
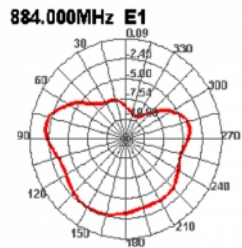
---

## Package content

- Antenna

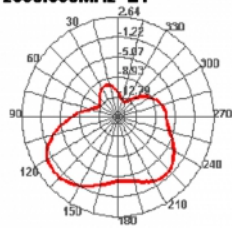
## Images



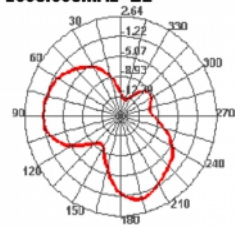




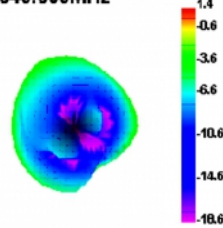
**2500.000MHz E1**



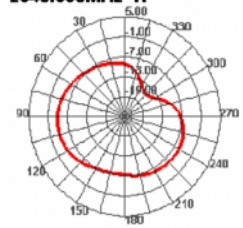
**2500.000MHz E2**



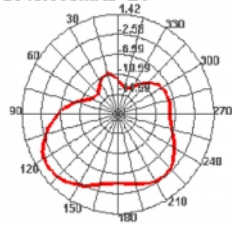
**2540.000MHz**



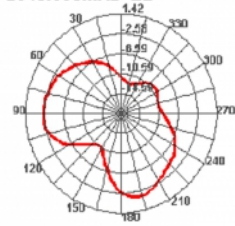
**2540.000MHz H**



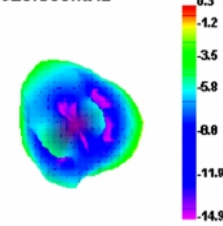
**2540.000MHz E1**



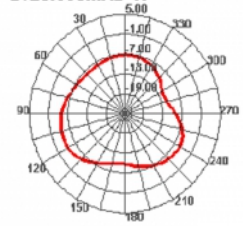
**2540.000MHz E2**



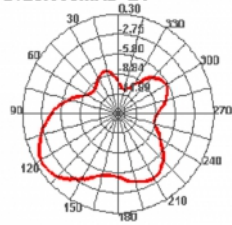
**2620.000MHz**



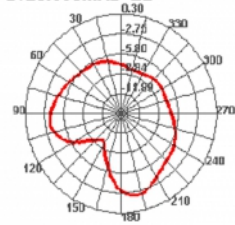
**2620.000MHz H**



**2620.000MHz E1**



**2620.000MHz E2**



## General

|                      |               |
|----------------------|---------------|
| Mounting type:       | Self adhesive |
| Suitable for indoor: | yes           |

## Interface

|            |                             |
|------------|-----------------------------|
| connector: | 1 x I-PEX Inc., MHF® I plug |
|------------|-----------------------------|

## Technical characteristics

|                        |                                  |
|------------------------|----------------------------------|
| Frequency range:       | 1710 - 2700 MHz<br>690 - 960 MHz |
| Antenna gain:          | 2 - 3 dBi                        |
| Impedance:             | 50 Ω                             |
| Operating temperature: | -10 °C ~ 55 °C                   |
| VSWR:                  | 1.5                              |

## Physical characteristics

|                               |                            |
|-------------------------------|----------------------------|
| Antenna type:                 | PCB                        |
| Cable category:               | coaxial                    |
| Cable attenuation:            | 3.2 dB @ 2.4 GHz per meter |
| Cable colour:                 | grey                       |
| Cable length incl. connector: | 10 cm                      |
| Length:                       | 96.0 mm                    |
| Width:                        | 14.0 mm                    |
| Height:                       | 0.9 mm                     |
| Smallest bending radius:      | 4.5 mm                     |