

# Delock Easy 45 DisplayPort Module straight 22.5 x 45 mm

## Description

This Easy 45 module by Delock is designed to provide a DisplayPort female port. The simple snap-in mechanism ensures that the module is firmly in place and can be easily removed if necessary.

### Easy 45 connects

Easy 45 is a variable, modular system that allows components such as sockets, HDMI or USB connections to be added according to your needs. The Easy 45 modules are standardised and can be mounted in various module holder or cable ducts. Easy 45 builds the interface between electrical, network and system installation and many peripheral devices such as TV, monitors, printers, laptops and much more.



### Item no. 81305

EAN: 4043619813056

Country of origin: Taiwan, Republic of China

Package: Zip poly bag

## Specification

- Connectors: 2 x DisplayPort female
- Resolution up to 7680 x 4320 @ 30 Hz (depending on the system and the connected hardware)
- Supports HDCP 2.2 (High-Bandwidth Digital Content Protection)
- Supports HDR
- Pin 20 is connected (supports 3.3 V)
- Material: PC plastic
- Suitable for module holder Delock Easy 45
- Suitable for 45 mm cable duct with minimum depth 45 mm
- Module size: 22.5 x 45 mm
- Dimensions (LxWxH): ca. 22.5 x 45.0 x 38.5 mm
- Colour: white

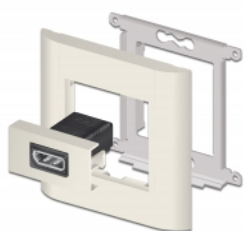
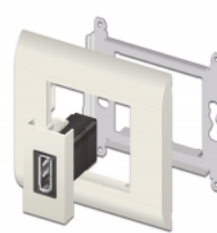
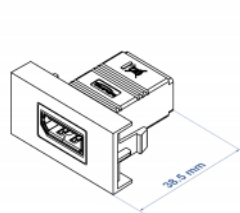
## System requirements

- A free module port Delock Easy 45

## Package content

- Easy 45 DisplayPort module

## Images



## General

Mounting type:	Easy 45
Specification:	HDCP 2.2 HDR

## Interface

connector:	1 x DisplayPort female
Connector 1:	1 x DisplayPort female

## Physical characteristics

Connector color:	black
Housing material:	Plastic
Length:	38,5 mm
Width:	22.5 mm
Height:	45 mm
Colour:	RAL 9003 Weiß