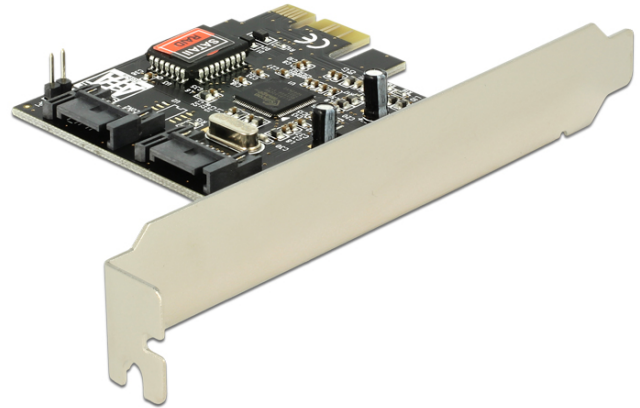


# Delock PCI Express Card > 2 x internal SATA 3 Gb/s + RAID

## Description

The Delock PCI Express card expands your PC by two internal SATA ports. You can connect devices like e.g. hard drives, DVD-drives etc. to the card.



## Specification

- Connectors:  
internal:  
2 x SATA 3 Gb/s 7 pin plug  
1 x PCI Express x1, V1.0a
- Data transfer rate up to 3 Gb/s
- Supports hard drive with Native Command Queue (NCQ) feature
- RAID 0, 1 (Windows Vista, 7)
- RAID 10, 5 are supported, if drives are connected to a Port Multiplier (Windows Vista, 7)
- Hot Plug

## System requirements

- Windows Vista/7/8.1/10, Linux Kernel 2.6, Mac OS 10.6
- PC with one free PCI Express slot

## Package content

- PCI Express card
- Driver CD
- User manual

Item no. 70137

EAN: 4043619701377

Country of origin: China

Package: Retail Box



## Images

