

# Delock DIN Rail 35 x 15 mm (25 cm) Aluminium

## Description

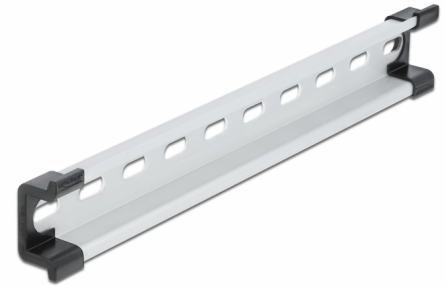
This DIN rail by Delock can be used to mounting different electronic devices and components.

### Multifunctional application

The DIN rail can be mounted in a control cabinet and is used as a mounting system, e.g. for power supplies, screw terminals and interface modules.

### Simple mounting option

To allow easy installation, the DIN rail is provided with slot holes.



**Item no. 66182**

EAN: 4043619661824

Country of origin: China

Package: Box

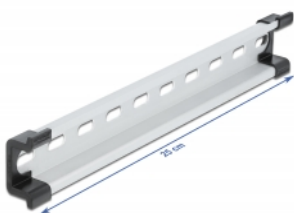
## Specification

- Mounting hole: 15.0 x 6.2 mm
- Material: aluminium
- Dimensions (LxWxH): ca. 250 x 35 x 15 mm

## Package content

- 1 x DIN rail
- 2 x end cover

## Images



## Physical characteristics

Material:	Aluminium
Length:	250 mm
Width:	35 mm
Height:	15 mm