

Delock Terminal Block Set for DIN Rail 8 pin with pitch 5.08 mm angled

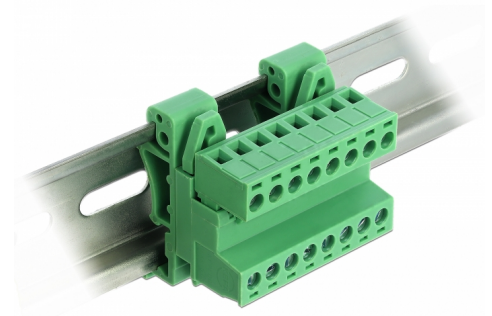
Description

This terminal block set by Delock is suitable for the mounting on a DIN rail. Thus data or power cables can be connected via the terminal block.

DIN Rail Mounting

This terminal block set can be fixed on a DIN rail with a width of 35 mm.

[Terminal Block Set for DIN Rail](#)



Item no. 66081

EAN: 4043619660810

Country of origin: China

Package: Zip poly bag

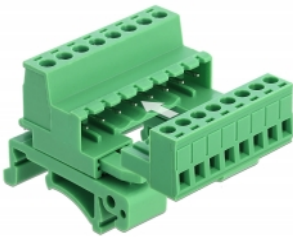
Specification

- Connectors:
 - Terminal block:
 - 1 x 8 pin male
 - 1 x 8 pin screw terminal
 - Connection terminal:
 - 1 x 8 pin female
 - 1 x 8 pin screw terminal
- Pitch: 5.08 mm
- Environmental temperature: -40 °C ~ 105 °C
- Useable for a cable gauge range from 24 to 12 AWG
- Withstanding voltage: AC 2500 V / 1 min
- Rated voltage according to: UL: 300 V, IEC: 320 V
- Rated current according to: UL: 10 A, IEC: 15 A
- DIN rail mounting: 35 mm
- Material: plastic
- Colour: green
- Dimensions (LxWxH): ca. 42.50 x 32.45 x 42.45 mm

Package content

- Terminal block
- Connection terminal
- DIN rail clip

Images



General

| | |
|-------------------------------|----------------|
| Suitable for conductor gauge: | 24 - 12 AWG |
| Mounting type: | DIN rail 35 mm |

Interface

| | |
|--------------|-------------------------|
| Connector 1: | 1 x 8 pin male |
| Connector 2: | 1 x 8 Pin Schraubklemme |
| connector 3: | 1 x 8 pin female |
| connector 4: | 1 x 8 Pin Schraubklemme |

Technical characteristics

| | |
|----------------------|-----------------|
| Storage temperature: | -40 °C ~ 105 °C |
|----------------------|-----------------|

Physical characteristics

| | |
|-------------------|----------|
| Housing material: | Plastic |
| Length: | 42.50 mm |
| Width: | 32.45 mm |
| Height: | 42,45 mm |
| Colour: | green |