

# Delock Converter 1 x Serial RS-232 DB9 to 1 x Serial RS-485 with ESD protection 15 kV surge protection 600 W

## Description

This RS-232 to RS-485 converter by Delock is suitable for all serial devices, e.g. on machine controls, fieldbus systems, measuring instruments, computers, printers etc. The level converter can be used as a coupling directly between two DB9 connections without an additional power supply.



**Item no. 64140**

EAN: 4043619641406

Country of origin: China

Package: Box

## Specification

- Connectors:
  - 1 x serial RS-232 DB9 female with screws
  - 1 x serial RS-485 DB9 male with nuts
  - 1 x RS-485 Terminal Block 4 pin
- Auto data flow control
- Plug & Play
- Supports Modbus
- Data transfer: asynchronous, half duplex
- Data transfer rate: 300 bps - 115.2 Kbps
- $\pm 15$  kV ESD protection for all serial RS-485 signals
- Surge protection: 600 W (TVS)
- Housing material: plastic
- Colour: beige
- Operating temperature:  $-25^{\circ}\text{C} \sim 70^{\circ}\text{C}$
- Relative humidity: 5 - 95 % (non condensing)
- Dimensions (LxWxH):
  - Converter: ca. 63 x 33 x 17 mm

Terminal block: ca. 32 x 31 x 16 mm

- Bus Power from RS-232: TXD, RTS or DTR
- No external power supply needed

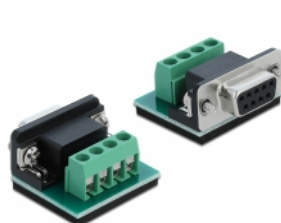
## System requirements

- Device with a free RS-232 port

## Package content

- Converter RS-232 to RS-485
- Terminal block adapter

## Images



03903	DB9 Buchse/Female	DB9 Stecker/Male	Terminalblock/Terminal Block
PIN	RS-232	RS-485	RS-485
1	DCD (Data Carrier Detect)	T/R (A+)	T/R (A+)
2	TXD (Transmit Data)	T/R (B-)	T/R (B-)
3	RXD (Receive Data)	NC	Signal GND (SG)
4	DTR (Data Terminal Ready)	NC	Optional 3 V
5	Signal GND (SG)	Signal GND (SG)	
6	DSR (Data Set Ready)	Optional 3 V	
7	RTS (Request to Send)		
8	CTS (Clear to Send)		
9	Ri (Ring)		

## General

Function:	Plug & Play Auto RTS Control
Specification:	RS-232 (EIA / TIA) RS-422 / RS-485 (EIA / TIA)
Supported operating system:	OS independent, no driver installation necessary
Protection:	ESD (Electrostatic Discharge) Surge Protection 600 W

## Interface

Connector 1:	1 x serial RS-232 DB9 female
Connector 2:	1 x Serial RS-485 DB9 male

## Technical characteristics

Data transfer rate:	300 bps - 115.2 Kbps
Operating temperature:	-25 °C ~ 70 °C
Humidity:	5 ~ 95 %
Data transmission:	asynchronous Half duplex
Voltage:	RS-232 Bus Power TXD, RTS or DTR

## Physical characteristics

Housing material:	Plastic
Pin finishing:	gold-plated
Screw type:	#4-40 UNC
Length:	63 mm
Width:	33 mm
Height:	17 mm